

PROF OFFICE

company profile



PR
OF

PROF OFFICE

company profile



**PR
OF**



COMPANY

SINCE
1995

Dall'esperienza nel settore del mobile, nel 1995 nasce Prof, una realtà industriale familiare che produce sistemi d'arredo per ufficio, fortemente radicata nel distretto del mobile del nord est italiano. In questi vent'anni il percorso di sviluppo e crescita economica di Prof l'ha condotta ad affacciarsi al mercato internazionale, contribuendo a diffondere la qualità del design italiano nel mondo.

Avvalendosi della consulenza di architetti e designer, l'azienda ha consolidato la propria identità e ampliato l'offerta di prodotti. Partendo dalle collezioni direzionali, ha sviluppato in seguito sistemi operativi, soluzioni per le reception e le sale riunioni, fino alle pareti divisorie e attrezzate. Questo oggi le permette di proporre soluzioni di arredo complete e personalizzate per tutti gli ambienti di lavoro.

Prof was born in 1995 from the furniture sector experience, a family industrial reality that produces office furniture systems, deep-rooted in the Italian north-east furniture district. In these twenty years, Prof economic route of development and growth allowed it to look out to the international market contributing to the Italian quality design diffusion in the world.

Taking advantage from architects and designer consultancy, Prof strengthened its identity and it widened the products offer. Beginning from the executive collections, it then developed secretarial systems, reception and conference rooms solutions, getting up to separating and equipped wall. Today, this allows it to propose complete and customized furnishing solution for any working site.

OUR HISTORY



Valter Zanco fonda Prof, azienda specializzata nella produzione di mobili per ufficio.

Valter Zanco founds Prof, a company specializing in the production of office furniture.



I figli Luana, Giorgia e Vanni Zanco entrano nel management dell'azienda.

His sons Luana, Giorgia e Vanni Zanco join the company.



Trasferimento nell'attuale sede di Falzè di Piave, TV Italy. Nascono le collezioni direzionali Spider, Miura e Daytona e operative Dieci, Uno e Zero.

They moved to the current headquarter in Falzè di Piave, TV Italy. Spider, Miura and Daytona executive and Dieci, Uno e Zero operative collections are born.



Inizia la collaborazione con Rmdesignstudio. Nuova immagine e prodotti.

The collaboration with Rmdesignstudio starts. New corporate image and products.



Nasce la collezione operativa Dodici.

Dodici operative collection is born.



Prof compie 20 anni e lancia il nuovo marchio green per affermare il suo impegno a tutela dell'ambiente.

Prof celebrates twenty years and launches its new green mark to confirm its commitment towards the environment.

1995

2000

2005

2009

2013

2015

1998

Nascono le collezioni direzionali Giove, Classic, Rubino, Leader Premiere, Diamante e operative Prodigio, Profilo, Clio e Opera.

Giove, Classic, Rubino, Leader Premiere, Diamante executive and Prodigio, Profilo, Clio and Opera operative collections are born.



2001

Nascono le collezioni direzionali Slim e Fast.

Slim and Fast executive collections are born.



2008

Nascono le collezioni direzionali Block, Plano, Light e le pareti divisorie Profwall, per integrare gli arredi agli spazi.

Block, Plano, Light executive collections and Profwall partitions are born, that integrates office furniture and spaces.



2012

Inaugurazione del nuovo showroom aziendale di 400 mq. Ottenimento delle certificazioni ISO 9001 per la gestione della qualità e ISO 14001 per la tutela ambientale.

Inauguration of the new 400 sqm company showroom. Obtainment of the ISO 9001 for the quality management and ISO 14001 for the environmental management.



2014

Nasce la collezione direzionale Sessanta.

Sessanta executive collection is born.



2016

Nasce la collezione operativa Openwall.

Openwall operative collection is born.





Ampliamento della sede.
Expansion of headquarter.



Nasce la collezione direzionale
Extralight Executive Collection.
Extralight Executive Collection
is born.



Nasce la collezione Grace Luxury
Lighting Collection.
Grace Luxury Lighting Collection is
born.



Nasce la collezione di appendiabiti
Jane.
The Jane coat stand collection is
born.



Restyling della collezione manager
e operativa Dieci.
Restyling of the manager and
working collection Dieci.



Restyling della collezione manager
e operativa Dodici.
Restyling of the manager and
working collection Dodici.



Restyling della collezione manager
e operativa Zero.
Restyling of the manager and
working collection Zero.

2017

2019

2021

2018

Nasce la collezione direzionale
Block 2.0 Luxury Executive
Collection.
Block 2.0 Luxury Executive
Collection is born.

2020

Nasce la collezione direzionale
Slim Executive Collection.
Slim Executive Collection is
born.

Nasce la collezione direzionale
Entry Executive Collection.
Entry Executive Collection is born.

2022

Restyling della linea di contenitori Profbox, Profslide e della libreria Profcase.
Restyling of the Profbox, Profslide cabinet line and Profcase library.





The mark of responsible forestry
FSC® C196224

Prof ottiene la certificazione FSC® come segno dell'impegno dell'azienda verso un sistema di produzione che minimizzi l'impatto ambientale.

Prof obtains FSC® certification as a sign of the company's commitment to a production system that minimises environmental impact.



Restyling della collezione Bespoke meeting table.

Restyling of the Bespoke meeting table collection.



Bespoke meeting table, design Rmdesignstudio, vince il premio di Archiproducts Design Award nella categoria Office.

Bespoke meeting table, design Rmdesignstudio, wins Archiproducts Design Award in the Office category.

YEARS **PR**
30
F

Prof compie 30 anni.

Prof celebrates twenty years.



Nasce la collezione direzionale FLOW.

FLOW executive collection is born.



La scrivania elevabile Flow, design Rmdesignstudio, vince il premio di Archiproducts Design Award nella categoria Office.

Flow adjustable desk, design Rmdesignstudio, wins Archiproducts Design Award in the Office category.

2023

2025

2024

Nasce la collezione di tavoli caffè, riunione e consolle Diana.

Diana collection of coffee tables, meeting table and console is born.

Dalla rivisitazione della collezione Block nasce la scrivania Élite.

From the reinterpretation of the Block collection comes the Élite desk.

Nasce Maya la collezione di fioriere indoor e outdoor.

Maya the collection of indoor and outdoor planters is born.

Nasce la collezione direzionale DEA collection.

DEA executive collection is born.



Prof ottiene la certificazione EMAS, importante riconoscimento europeo per la gestione ambientale sostenibile.

Prof obtains EMAS certification, an important European accreditation for sustainable environmental management.

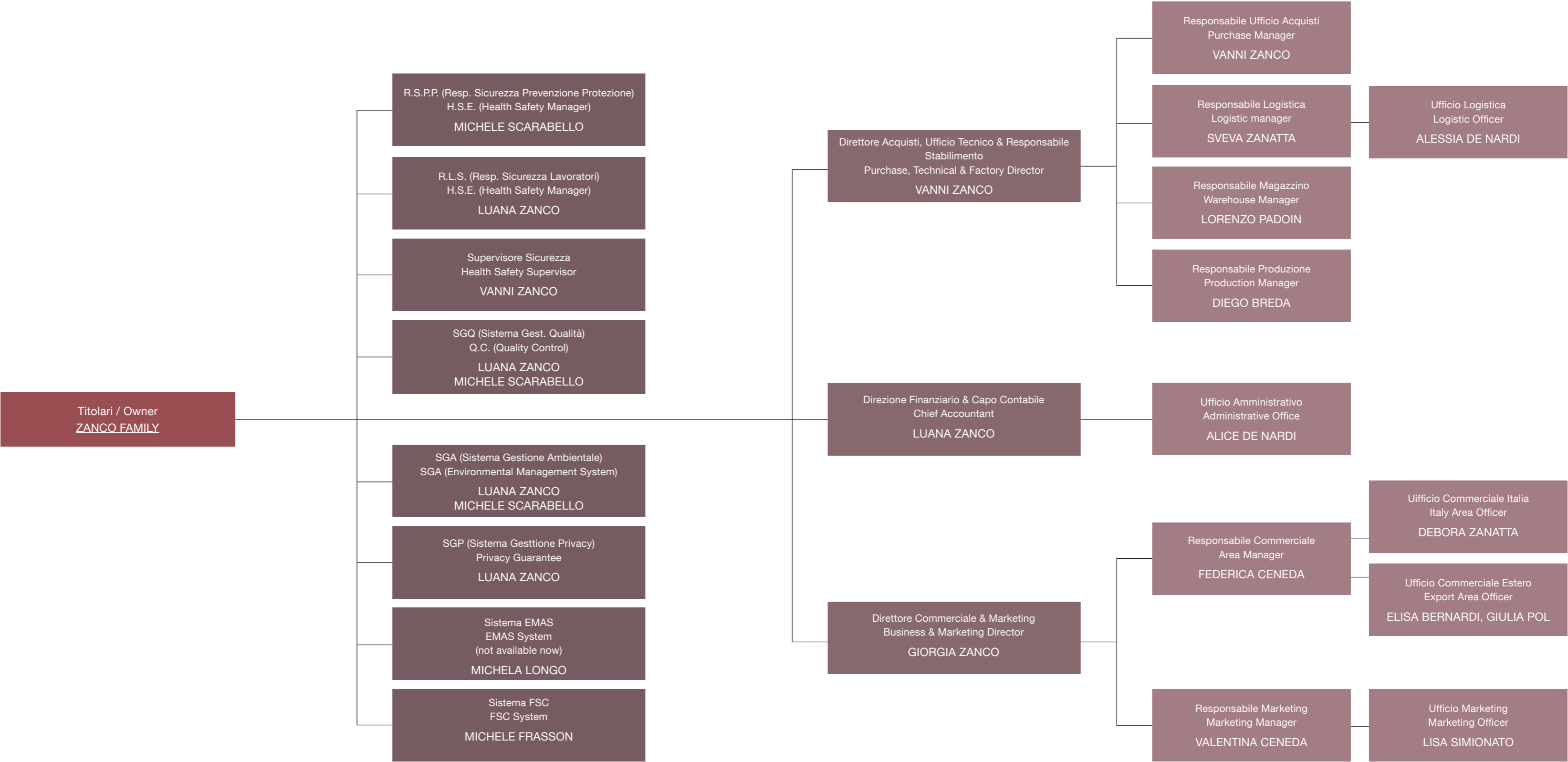
2026

La collezione direzionale Block si rinnova.

Block executive collection has been updated.



COMPANY STRUCTURE





6000 mq

1000 mq SHOWROOM

500 mq OFFICE

4500 mq PRODUCTION



HEADQUARTER

La sede di Prof, con lo stabilimento e gli uffici, si trova a Falzè di Piave, in provincia di Treviso e a 70 chilometri a nord di Venezia, in uno dei più importanti distretti produttivi del mobile d'Europa. Si sviluppa su una superficie totale di circa 8700 metri quadrati, di cui 3600 coperti.

Lo stabilimento, specializzato nella produzione di arredo per ufficio, è attrezzato per lavorazioni del legno, assemblaggio, imballo, magazzino e reparto spedizioni dei prodotti finiti.

La sede ospita gli uffici direzionali, commerciali, tecnici e amministrativi, le aree meeting dedicate all'accoglienza dei clienti e uno showroom di oltre 400 mq che espone tutte le collezioni di arredo per ufficio.

Nel 2017 è stato realizzato un ampliamento della sede di 1800 metri quadrati, di cui 670 destinati alla produzione, 330 agli uffici, 800 allo showroom.

Prof headquarters, with the plant and offices, is located in Falzè di Piave, in the province of Treviso and 70 kilometers north of Venice, in one of the most important industrial furniture districts of Europe. It spreads over a total area of about 8700 square meters, of which 3600 are covered.

The plant, specialized in the production of office furniture, is equipped to work in wood, assembly, packing, warehouse and shipping department of finished products.

The headquarters is home to the executive, sales, technical and administrative, the meeting areas for the reception of clients and a showroom of over 400 square meters, which exposes all the collections of office furniture.

In the 2017 it has been realized an expansion of 1800 square meters, of which 670 intended for production, 330 for the offices, 800 for the showroom.



INDUSTRY 5.0

L'azienda produce unicamente nello stabilimento di Falzè di Piave, in provincia di Treviso e da sempre fonda la sua identità nei valori del massimo rispetto verso le persone, il territorio e le materie.

Il forte radicamento al territorio e quell'innata capacità del "saper fare" che ha saputo evolversi, grazie anche alle nuove tecnologie, hanno consentito a Prof di affermare e consolidare il proprio successo, continuando a coniugare tradizione e innovazione, adeguandosi ai nuovi cambiamenti sociali ed economici. L'organizzazione produttiva di Prof è orientata al "just in time e all'industria 5.0", una transizione che rappresenta un'opportunità per rafforzare il nostro modello industriale, rendendolo più solido, responsabile e orientato al futuro.

Tutta la filiera di Prof si sviluppa in Italia e principalmente all'interno del distretto produttivo di appartenenza, ove sono ubicati la grande maggioranza dei fornitori di materie prime e di semilavorati.

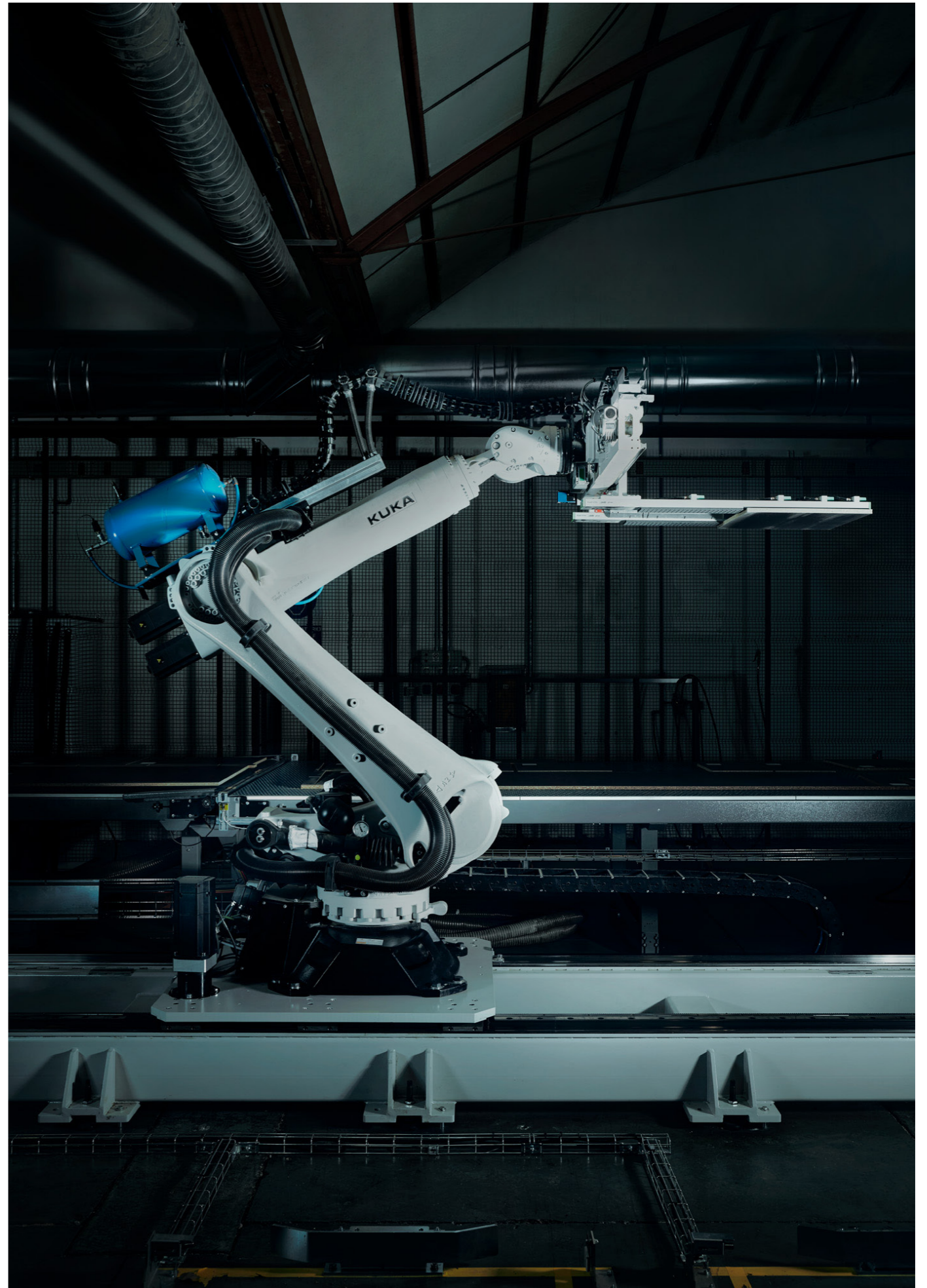
I prodotti sono interamente progettati e realizzati in Italia, per garantire uno standard di eccellenza costante.

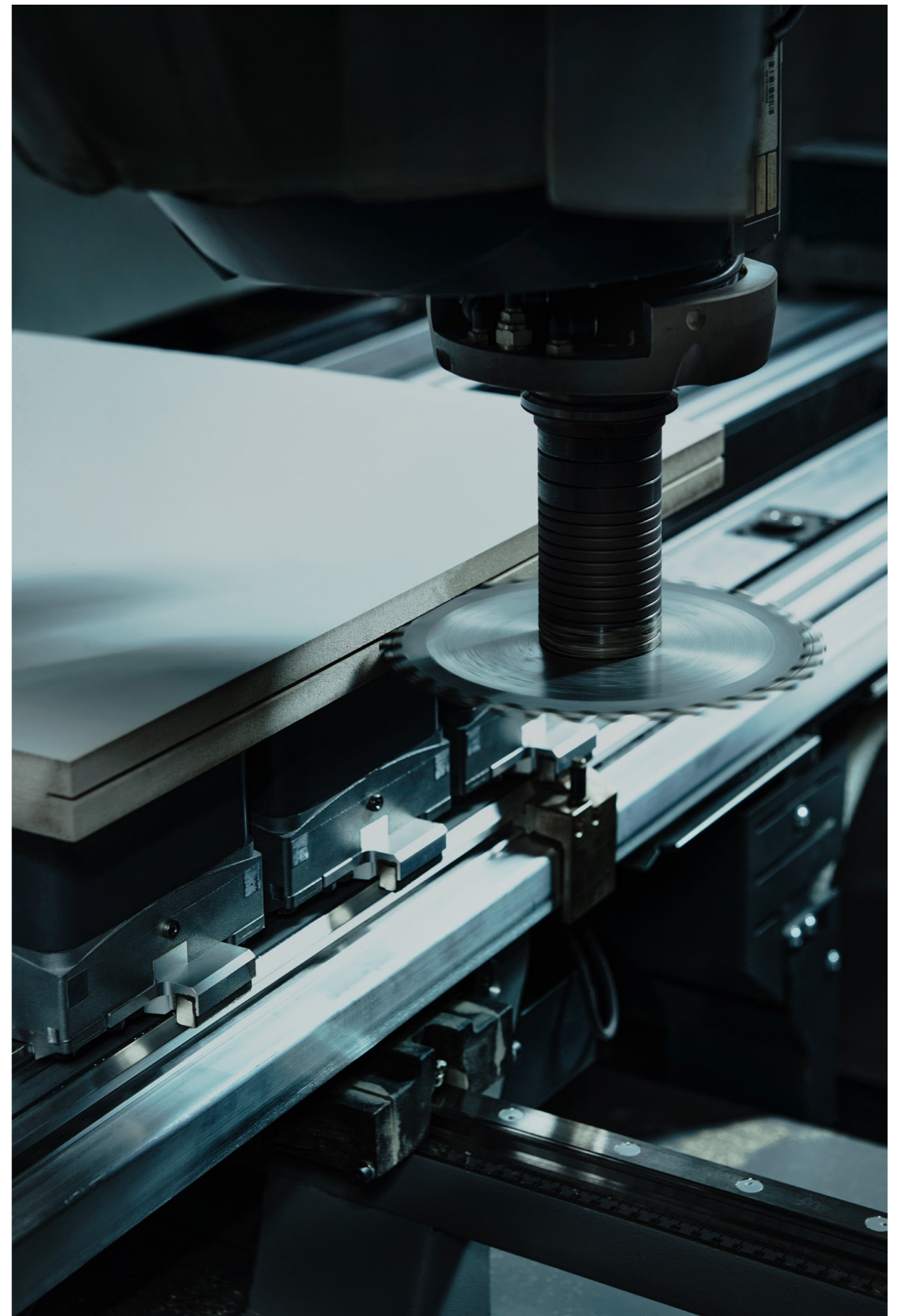
The company produces exclusively in the establishment of Falzè di Piave, in the province of Treviso and always bases its identity in the maximum values respect for people, the land and materials.

The strong local roots and that innate ability of "know how" that has evolved, also thanks to new technologies, have enabled Prof to affirm and consolidate its success, continuing to combine tradition and innovation, adapting to new social and economic changes.

The Prof's manufacturing organization is geared to the "just in time and industry 5.0", a transition that presents an opportunity to strengthen our business model, making it more robust, responsible and forward-looking.

The whole chain of Prof develops in Italy, mainly in the manufacturing district of belonging, where are located the vast majority of raw materials and semi-finished products suppliers. The products are entirely designed and made in Italy, to ensure a standard of consistent excellence.







HOW WE WORK

DESIGN



MADE IN ITALY



In Prof ogni elemento d'arredo nasce dalla capacità di interpretare il continuo mutamento delle dinamiche negli ambienti di lavoro. La ricerca rappresenta da sempre l'elemento strategico nella politica di crescita aziendale e si esprime attraverso un Design Department interno, che opera a stretto contatto con i progettisti esterni ed è in costante aggiornamento con l'evoluzione tecnologica e normativa.

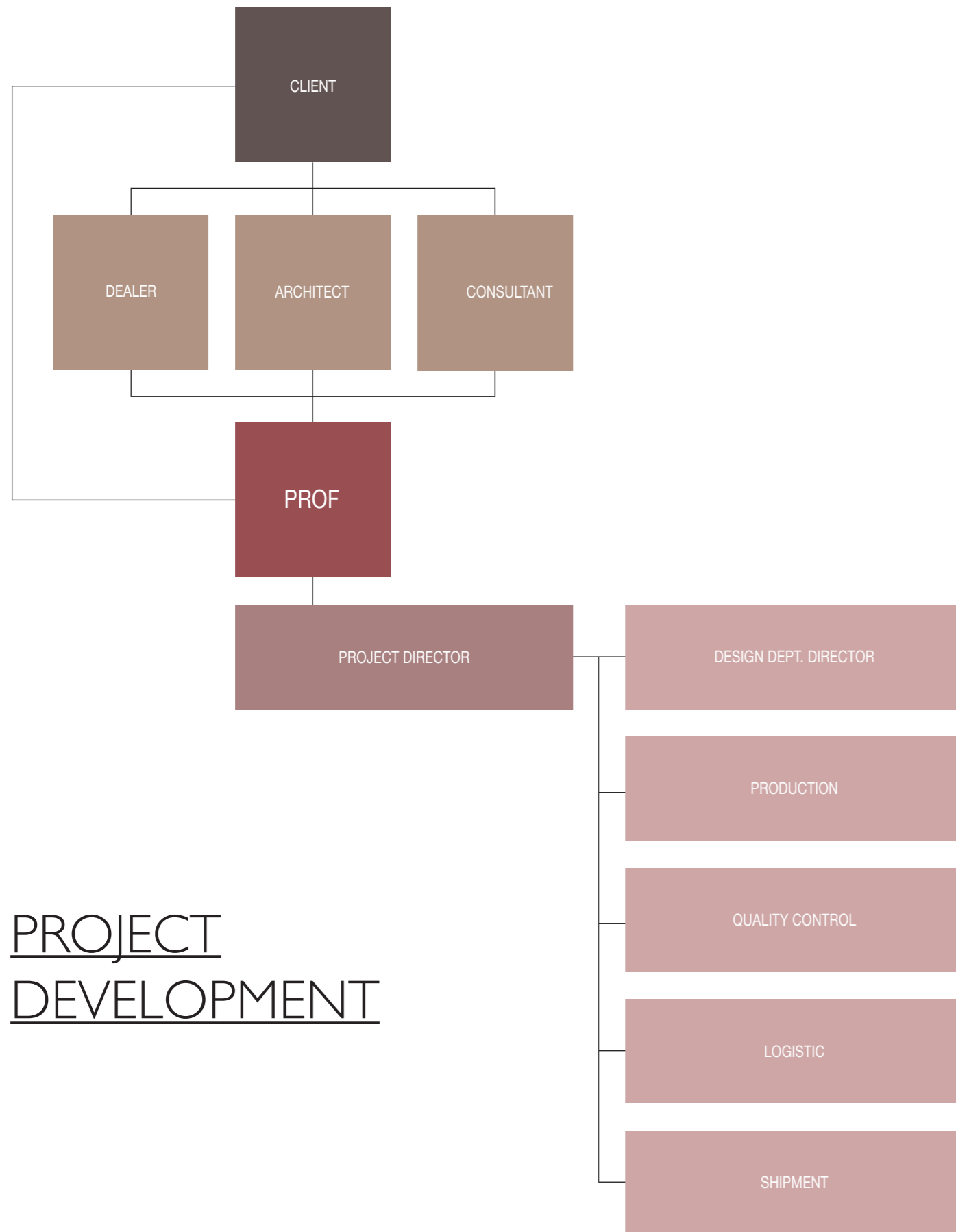
I prodotti Prof sono progettati e interamente realizzati in Italia nel pieno rispetto degli standard europei in materia di salute e sicurezza nei luoghi di lavoro.

Per questo motivo le collezioni Prof si distinguono per l'elevato design, l'ergonomia e la funzionalità.

In Prof company, any furnishing element rises from the ability to understand the constantly changing of the working places dynamics. The research has always represented the strategic element of the company policy of business growth and it expresses through an internal Design Department working closely in contact with external designers and it is constantly updating with the technological and legislative evolution.

Prof models are entirely designed and manufactured in Italy, in full compliance with European standards concerning the health and safety in the workplace.

For this reason, Prof collections stand out for the high design, the ergonomics and the functionality.



PROJECT DEVELOPMENT

PROJECT CONSULTING

Prof offre un servizio di progettazione e consulenza completa che comprende l'analisi delle richieste del committente, lo studio del layout con proposte di arredo mirate e personalizzate attraverso disegni tecnici e render fotorealistici.

Prof provides a comprehensive design and advice service including the analysis of the customers' requests, the layout study with targeted and personalized furnishing proposals with technical drawings and photorealistic renders.

CUSTOMIZATION

Prof è in grado di proporre e realizzare un servizio di customizzazione del prodotto di serie: dalla produzione di pezzi fuori misura, alla ricerca di nuovi materiali e finiture, alla realizzazione di campionature e prototipi. Grazie alla sua versatilità produttiva, Prof ha sviluppato negli anni una competenza specifica nelle forniture su misura che vanno dai progetti di piccole-medie dimensioni fino a grandi realizzazioni personalizzate.

Prof can propose and make a customized service on standard production models: from the production of oversized items, to the search of new materials and finishes, up to the carrying out of samples and prototypes. Thanks to its production versatility, over the years Prof has developed a specific expertise in the custom-made supplies going from small-medium size projects to great personalized creations.

AFTER-SALES SERVICE

Attraverso il sistema certificato UNI EN ISO 9001 per la gestione dei prodotti non conformi e dei reclami, Prof ha il costante controllo dei problemi riscontrati in fase di montaggio e di utilizzo. L'azienda offre un servizio dedicato all'assistenza tecnica e post vendita che garantisce informazioni complete e fornisce cambi e riparazioni.

Through the UNI EN ISO 9001 certificate system for the management of non-compliant products and complaints, Prof has got the continuous control of the problems encountered during assembly and use phases.

The company provides a service for the technical and after-sales assistance with complete information, changes and repairs.



BESPOKE PRODUTCS

La flessibilità produttiva di Prof permette, oltre alla produzione in serie, la realizzazione di progetti definiti su misura su specifiche esigenze del committente.

Il nostro design department è in grado di supportare il cliente o il progettista nello sviluppo e nella realizzazione di prodotti unici, sia nelle soluzioni funzionali che estetiche, con finiture totalmente personalizzate.

Un'attenta consulenza in ogni fase di sviluppo: una progettazione mirata, con un'accurata selezione dei materiali e con un'estrema attenzione ai dettagli, che si concretizza nella realizzazione, seguita passo dopo passo fino all'installazione finale.

La produzione è interamente sartoriale, secondo il metodo bespoke: su richiesta e su misura.

Prof production flexibility allows, in addition to series production, the realization of projects defined custom made to the client's specific needs.

Our design department is able to support the client or the designer in the development and production of unique products, both in functional and aesthetic solutions, with totally customized finishes.

Careful consultancy at every stage of development: a targeted design, with a careful selection of materials and with the greatest attention to detail, which culminated in constructing, followed step by step until the final installation.

The production is entirely tailored according to the bespoke method: on request and custom made.



WE CARE

QUALITY AND ENVIRONMENT



Per rispondere alla crescente competitività nei mercati internazionali attraverso il miglioramento della soddisfazione e della fidelizzazione dei clienti, la razionalizzazione dei processi produttivi interni, Prof ha ottenuto nel 2012 la certificazione ISO 9001:2008. L'adozione di un sistema di gestione per la qualità rappresenta per Prof una decisione strategica che consente di raggiungere obiettivi aziendali sempre più concreti.

In un mondo costantemente alla ricerca della qualità e sempre più sensibile alle problematiche ecologiche, Prof mette in campo la massima professionalità nel progettare e produrre mobili per ufficio rispettando l'ambiente. Dalla materia prima accuratamente selezionata, all'intero processo di trasformazione e imballaggio fino allo smaltimento, tutto è finalizzato alla salvaguardia della salute ed al risparmio energetico.

Prof infatti, utilizza pannelli certificati E1 in rispondenza alle normative europee in materia di emissione di formaldeide sia per il prodotto grezzo che per il nobilitato.

Inoltre ciascun pannello è marchiato dal Consorzio Pannello Ecologico a garanzia che i semilavorati sono prodotti mediante il reimpiego del legno con un processo produttivo che non comporta l'abbattimento di alberi.

L'ottenimento nel 2012 della certificazione ISO 14001:2004 dimostra l'impegno concreto di Prof nel voler stabilire un proprio sistema di gestione ambientale che regola l'impatto ambientale delle attività produttive e ne ricerca sistematicamente il miglioramento.

Nel 2015 in concomitanza con i venti anni dell'azienda, Prof lancia il suo nuovo marchio green per riconfermare e rendere riconoscibile il suo impegno verso il tema della sostenibilità ambientale, come parte integrante della propria attività e del proprio processo di crescita produttiva.

Nel 2017 l'azienda riconferma la propria strategia "eco-friendly" confermando i propri valori di "sustainable" e "responsibility" e fa lo appoggiandosi ad un nuovo gestore di energia elettrica (Dolomiti Energia) proveniente da fonti rinnovabili al 100%.

In order to answer to the increasing competitiveness of the international markets through the improvement of the customer satisfaction and loyalty, the rationalizing of the internal producing processes, Prof attained ISO 9001:2008 certification in 2012. The adoption of a quality management system represents for Prof a strategic decision giving the possibility to achieve business objectives more and more concrete.

In a world steadily looking for the quality and increasingly sensible to ecological problems, Prof puts in place the maximum expertise in the office furniture design and production while respecting the environment. Starting from the carefully selected raw material, the whole process of transformation and packaging up to the disposal, all aims at the health safeguarding and at energy saving.

In effect, Prof uses certified E1 panels according to the European regulations regarding formaldehyde emission for both the raw product and the melamine.

Then, any panel is marked from the Ecological Panel Consortium guaranteeing that the semi-finished products are produced by the reuse of wood with a manufacturing process that does not involve the felling of trees.

The obtainment of the ISO 14001:2004 certification in 2012 certifies Prof concrete commitment in establishing their own environmental management system that regulates the environmental impact of production activities trying systematically to improve it.

In 2016 at the same time of the company twenty years, Prof launches its new green mark to confirm and make identifiable its commitment towards the environmental sustainability as integral part of its activity and of its process of production growth.

In 2017 the company confirms its strategy "eco-friendly" reconfirming its values of "sustainable" and "responsibility" and he does this by leaning to a new operator of electricity (Dolomiti Energia) coming from 100% renewable sources.





ECOPACKING

Continua l'impegno di Prof verso un sistema produttivo in grado di ridurre al minimo l'impatto ambientale. Nel 2016 investe in un macchinario ad alta tecnologia per l'imballaggio in cartone biodegradabile, che permette la formazione dell'imballo su misura just in time. L'ottimizzazione sullo specifico prodotto consente una notevole riduzione dei costi di confezionamento, di magazzino e conseguentemente dei rifiuti da smaltire. Per migliorare la gestione dei rifiuti nello stabilimento sono stati collocati diversi punti di raccolta differenziata degli scarti di lavorazione. Tutti sono immagazzinati in appositi contenitori per essere poi destinati alle procedure di riciclo.

Prof continues its commitment towards a production system able to minimize the environmental impact . In 2016 Prof invests in a high-tech machinery for packaging made of biodegradable cardboard, which allows the packaging customized training just in time. The optimization on the specific product allows a considerable reduction of packaging costs, warehouse and consequently of the waste to be disposed. In order to improve the management of waste in the company, several separate collection points of processing waste have been placed. All are stored in special containers to be then destined to recycling procedures.



CERTIFICATIONS

Certificato di Registrazione

Registration Certificate



PROF S.R.L.
Via Cao de Villa 6/A
31020 - Sernaglia della Battaglia (Treviso)

N. Registrazione: **IT-002337**
Registration Number

Data di Registrazione: 18 Ottobre 2024
Registration Date

Siti:
1] Sede legale e operativa - Via Cao de Villa 6/A - Sernaglia della Battaglia (TV)

FABBRICAZIONE DI MOBILI PER UFFICI E NEGOZI
MANUFACTURE OF OFFICE AND SHOP FURNITURE

NACE: 31.01

Questa Organizzazione ha adottato un sistema di gestione ambientale conforme al Regolamento EMAS allo scopo di attuare il miglioramento continuo delle proprie prestazioni ambientali e di pubblicare una dichiarazione ambientale. Il sistema di gestione ambientale è stato verificato e la dichiarazione ambientale è stata convalidata da un verificatore ambientale accreditato. L'Organizzazione è stata registrata secondo lo schema EMAS e pertanto è autorizzata a utilizzare il relativo logo. Il presente certificato ha validità soltanto se l'organizzazione risulta inserita nell'elenco nazionale delle organizzazioni registrate EMAS.

This Organisation has established an environmental management system according to EMAS Regulation in order to promote the continuous improvement of its environmental performance and to publish an environmental statement. The environmental management system has been verified and the environmental statement has been validated by accredited environmental verifier. The Organization is registered under EMAS and therefore is entitled to use the EMAS Logo. This certificate is valid only if the Organization is listed into the national EMAS Register.

Roma, 18 Ottobre 2024
Rome

Certificato valido fino al: 14 Dicembre 2026
Expiry date

Comitato Ecolabel - Ecoaudit
Sezione EMAS Italia
Il Presidente
Dott. Enrico Cancila

f.to digitalmente

"Il presente atto è firmato digitalmente ai sensi del D.P.R. n.445/2000 e del D.lgs. 7 marzo 2005 n.82 e norme collegate. Detta modalità sostituisce il testo cartaceo e la firma autografa".

EMAS



Siamo orgogliosi di annunciare che Prof ha ottenuto la certificazione EMAS, importante riconoscimento europeo per la gestione ambientale sostenibile. Questo traguardo testimonia il nostro impegno a ridurre l'impatto ambientale e a promuovere pratiche responsabili in ogni fase delle nostre attività.

Grazie all'adozione di standard ambientali elevati, ci impegniamo a contribuire alla tutela dell'ambiente e a garantire un futuro più sostenibile per le generazioni a venire.

We are proud to announce that Prof has achieved EMAS certification, an important European accreditation for sustainable environmental management. This achievement demonstrates our commitment to reducing our environmental impact and promoting responsible practices at every stage of our operations.

By adopting high environmental standards, we are committed to contributing to the protection of the environment and ensuring a more sustainable future for generations to come.



Synesgy Certificate

Presented to **PROF SRL**
VIA CAO DE VILLA 6/A, 31020, SERNAGLIA DELLA BATTAGLIA, Italy

Certification date	Valid until	Macro-industry	Country
08 November 2024	08 November 2025	Wood and paper	Italy

This certificate is issued to PROF SRL (company ID: 03134570260) by CRIBIS D&B S.r.l. for participating in the ESG assessment through the Synesgy platform on **08 November 2024**.

PROF SRL has the score **"B - Good"**.

Synesgy's methodology follows generally accepted international sustainability standards such as the Global Reporting Initiative (GRI) and the Sustainable Development Goals (SDGs) and has been developed by CRIF Ratings, a Credit Rating Agency operating under ESMA supervision.

This score is valid for one year until the **08 November 2025**.

A	ESG SCORE: B Good level of Sustainability Company with a good level of compliance with ESG principles, in line with national and international best practices. The ESG Score complies with the international standards (Global Reporting Initiative, European Sustainability Reporting Standards and Sustainable Development Goals) and considers the most important, material and significant aspects relating to Environmental, Social and Governance factors.
B	
C	
D	
E	

ESG Score represents the evaluation of the compliance to ESG principles (Environment, Social, Governance) of a business, taking also into consideration industry sector and country/region.



The ESG Score is calculated based on a proprietary methodology from CRIF S.p.A. and is based on the information which is disclosed by the subject itself to whom the score is referred to (Evaluated Entity). Above mentioned information is voluntarily disclosed under the only responsibility of the Evaluated Entity and is not verified by CRIF S.p.A. The ESG Score is referred to completion date of the questionnaire (it is not monitored continuously in time). The ESG Score is not a certification nor a specific evaluation, it has the only scope to group Evaluated Entities in reference classes for information purpose only. The ESG Score is not subject to any guarantee of accuracy, completeness, reliability of the data. CRIF S.p.A. has not responsibility on the use of the score from third parties. CRIF S.p.A. is not liable for any decision based on the ESG Score taken by the Evaluated Entity or by any other entity.
*The methodology used for the assessment platform is derived by CRIF Ratings. CRIF Ratings is a company whose general rating framework is certified by the European Securities and Markets Authority (ESMA).

CRIF uses the GRI Standards under licensed authority from GRI, which verified the accurate representation of the GRI standards in Synesgy. However, GRI makes no implied or actual representations or warranties as to the correctness, compliance, trustworthiness, fitness of purpose or quality of the score presented in this assessment.

CERTIFICAZIONE ESG

ESG è un acronimo che si riferisce a tre dimensioni della sostenibilità: quella ambientale, quella sociale e quella della governance (Environmental, Social, Governance).

Sono gli aspetti a cui si fa riferimento quando si valuta la sostenibilità aziendale, in particolare la capacità di allinearsi ad una serie di requisiti fondamentali per lo sviluppo sostenibile dal punto di vista economico, ambientale, sociale e di governance aziendale. Le attività di valutazione della conformità prendono contemporaneamente in considerazione aspetti economici, ambientali, sociali e di etica che si intrecciano in un circolo virtuoso.

ESG is an acronym that refers to three dimensions of sustainability: environmental, social and governance (Environmental, Social, Governance).

These are the aspects referred to when assessing corporate sustainability, in particular the ability to align with a set of fundamental requirements for sustainable development from an economic, environmental, social and corporate governance perspective. Compliance assessment activities simultaneously take into account economic, environmental, social and ethical aspects that are intertwined in a virtuous circle.

This is a translation of the certificate IT12/1126

The management system of

PROF S.r.l.

Via Cao De Villa, 6/a Loc. Falzè di Piave 31020 Semaglia della Battaglia (TV) Italia
has been assessed and certified as meeting the requirements of

ISO 14001:2015

For the following activities

Design and production of furniture and partitions for offices through the phases of cutting, drilling, edging and assembly. Marketing of accessories and furnishing accessories.

IAF Sector: 23, 29

This certificate is valid from 21 December 2024 until 21 December 2027 and remains valid subject to satisfactory surveillance audits.

Issue 7. Certified since 21 December 2012

Assessed in accordance with the provisions of the Accredia Technical Regulation RT-09.



Authorised by
Paola Santarelli

SGS ITALIA S.p.A.
Via Caldera, 21 20153 MILANO - Italy
t + 39 02 73 93 1 - www.sgs.com



This document is an authentic electronic certificate for Client business purposes use only. Printed version of the electronic certificate are permitted and will be considered as a copy. This document is issued by the Company subject to SGS General Conditions of certification services available on [Terms and Conditions](#) | SGS. Attention is drawn to the limitation of liability, indemnification and jurisdictional clauses contained therein. This document is copyright protected and any unauthorized alteration, forgery or falsification of the content or appearance of this document is unlawful.

Page 1 / 1

SGS



ISO 14001:2015

In Prof, la sostenibilità è un impegno che portiamo avanti con grande responsabilità.

L'azienda è infatti certificata UNI EN ISO 14001:2015, certificazione che riconosce l'impegno concreto di Prof nel voler stabilire un proprio sistema di gestione ambientale che regola l'impatto ambientale delle attività produttive e ne ricerca sistematicamente il miglioramento.

In Prof, sustainability is a commitment that we pursue with great responsibility.

In fact, the company is UNI EN ISO 14001:2015 certified, a certification that recognises Prof's concrete commitment to establishing its own environmental management system that regulates the environmental impact of production activities and systematically seeks its improvement.

CERTIFICATE OF REGISTRATION

This is to certify that:

Prof Srl

Registered Address: Via Cao De Villa 6/A Loc. Falzè di Piave, 31020 Sernaglia della Battaglia (TV), Italy

Certified Site: Via Cao De Villa 6/A Loc. Falzè di Piave, 31020 Sernaglia della Battaglia (TV), Italy

has been assessed and certified as meeting the requirements of standard(s): **FSC-STD-40-004 V3.1 STANDARD FOR COC CERTIFICATION; FSC-STD-50-001 V2.1 CERTIFICATE HOLDER TRADEMARK REQUIREMENTS** for FSC® Chain of Custody Certification

Scope: Wood manufacturer

Type of Certification: Single

Method: FSC Transfer system

Certificate Number: INT-COC-001762

For and on behalf of Interface NRM Ltd



Dr. Gavin Jordan
Director, Interface NRM Ltd.

First Issue Date: 14/11/2023

Latest Issue Date: 14/11/2023

Certificate Expiry Date: 13/11/2028

Issue No: 1



The mark of
responsible forestry

- The validity of this certificate and the list of products covered by this certificate should be verified at www.info.fsc.org, Forest Stewardship Council®
- The certificate itself does not constitute evidence that a particular product supplied by the certificate holder is FSC certified (or FSC Controlled Wood).
- Products offered, shipped or sold by the certificate holder can only be considered covered by the scope of this certificate when the required FSC claim is clearly stated on sales and/or delivery documents.
- The certificate including all copies or reproductions is the property of Interface NRM Ltd and shall be returned or destroyed upon request.

Interface NRM Limited, e-Innovation Centre, University of Wolverhampton,
Priorslee, Telford, Shropshire, TF2 9FT, United Kingdom.
www.interface-nrm.co.uk



The mark of
responsible forestry

FSC®

La certificazione di Catena di Custodia di FSC® garantisce la tracciabilità dei materiali assicurando che provengono da foreste certificate FSC®.

La certificazione FSC® (Forest Stewardship Council®) è una delle certificazioni più riconosciute e rispettate a livello mondiale per la gestione sostenibile delle risorse forestali. Si tratta di un importante strumento per promuovere la sostenibilità nell'industria forestale e nella produzione di prodotti legnosi, contribuendo a preservare le foreste e a garantire che le risorse forestali siano gestite in modo responsabile.

The FSC® Chain of Custody certification guarantees the traceability of the materials by ensuring that they come from FSC® certified forests.

FSC® (Forest Stewardship Council®) certification is one of the most recognized and respected certifications worldwide for the sustainable management of forest resources. It is an important tool for promoting sustainability in the forestry industry and the production of wood products, helping to preserve forests and ensure that forest resources are managed responsibly.



CARB
PHASE II 
COMPLIANT

CARB ATCM Phase II

Prof, oltre ad utilizzare pannelli certificati E1 in rispondenza alle normative europee in materia di emissione di formaldeide sia per il prodotto grezzo che per il nobilitato, ha introdotto pannelli certificati CARB ATCM phase II, progettati con l'obiettivo di garantire la massima qualità dei materiali combinata con un'impronta ecologica ridotta.

La certificazione CARB ATCM phase II stabilisce rigorosi standard di qualità dell'aria interna per i prodotti al fine di garantire un ambiente più sicuro e più ecologico. Il suo scopo è ridurre le emissioni di formaldeide e proteggere il pubblico dagli effetti nocivi dell'inquinamento atmosferico.

Prof, in addition to using E1 certified panels in compliance with European formaldehyde emission regulations for both raw product and melamine, has introduced CARB ATCM phase II certified panels, designed with the aim of ensuring the highest quality of materials, combined with a reduced ecological footprint.

CARB ATCM phase II certification sets severe indoor air quality standards for products to ensure a safer and greener environment. Its aim is to reduce formaldehyde emissions and protect the public from the harmful effects of air pollution.

This is a translation of the certificate IT15/0708

The management system of

PROF S.r.l.

Via Cao De Villa, 6/a Loc. Falzè di Piave 31020 Sernaglia della Battaglia (TV) Italia

has been assessed and certified as meeting the requirements of
ISO 9001:2015

For the following activities

Design, production and marketing of office furniture, furnishing and partition wall.

IAF Sector: 23, 29

This certificate is valid from 28 November 2023 until 28 November 2026 and remains valid subject to satisfaction of the requirements of the standard.
Issue 4. Certified since 17 September 2015



Authorised by
Paola Santarelli

SGS ITALIA S.p.A.
Via Caldera, 21 20153 MILANO - Italy
t + 39 02 73 93 1 - www.sgs.com



SGQ N° 0015 A
Membro degli Accordi di Mutuo
Riconoscimento EA, IAF e ILAC
Signatory of EA, IAF and ILAC Mutual
Recognition Agreements

This document is an authentic electronic certificate for Client' business purposes use only. Printed version of the electronic certificate are permitted and will be considered valid. This document is issued by the Company subject to SGS General Conditions of certification services. Attention is drawn to the limitation of liability, indemnification and jurisdictional clauses contained therein. This document is copyright protected and any unauthorized alteration, forgery or falsification of this document is unlawful.

Page 1 / 1

SGS



ISO 9001:2015

Prof è orgogliosa di essere certificata ISO 9001:2015, uno standard internazionale riconosciuto per la gestione della qualità. Questa certificazione riflette il nostro impegno costante nel fornire mobili di alta qualità, progettati per soddisfare le esigenze e le aspettative dei nostri clienti.

La norma ISO 9001:2015 garantisce che i nostri processi aziendali seguano i più elevati standard di efficienza e qualità, dall'ideazione alla realizzazione del prodotto finito. Ogni fase del processo produttivo è monitorata per assicurare un risultato finale che rispecchi la nostra attenzione ai dettagli, la durata e la funzionalità dei nostri mobili.

Prof is proud to be certified to ISO 9001:2015, a recognised international standard for quality management. This certification reflects our unwavering commitment to providing high quality furniture, designed to meet the needs and expectations of our customers.

The ISO 9001:2015 standard ensures that our business processes follow the highest standards of efficiency and quality, from conception to production of the finished product. Each stage of the production process is monitored to ensure an end result that reflects our attention to detail, durability and the functionality of our furniture.

COMPANY SHOWROOM







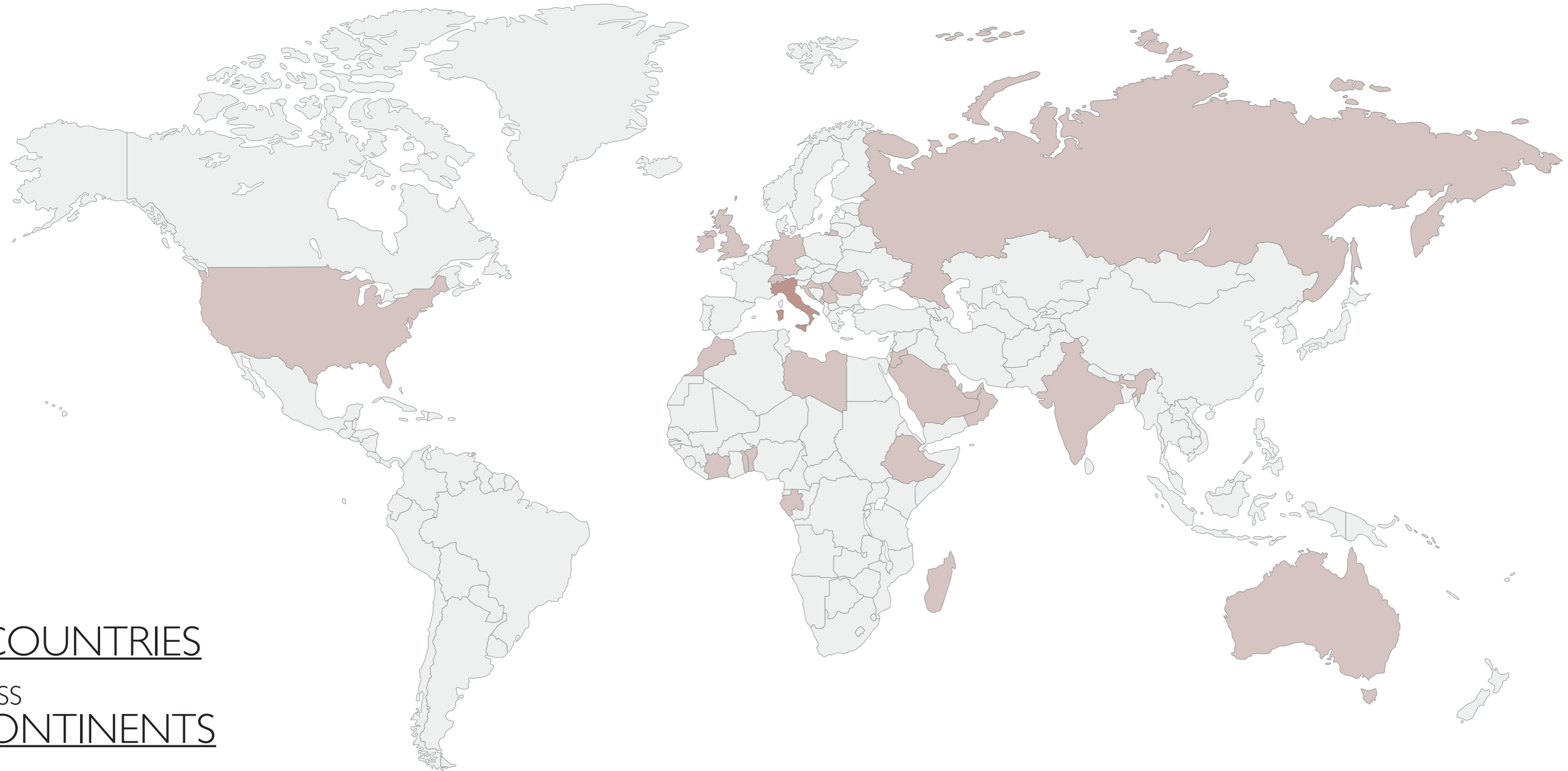






REFERENCES

FROM ITALY TO THE WORLD



OVER
30 COUNTRIES
ACROSS
5 CONTINENTS

ITALY

Arezzo

Bindi s.p.a.
Gall'oro s.r.l.

Belluno

Azzalini Oil Company
Buzziati Transport Company
Dolomiti Bus s.p.a. - 2023

Bologna

VRM Italia s.p.a. Precision Machining

Bolzano

PVB Petrovilla

Bergamo

Lopigom S.p.A.

Brescia

Terraroli Morelli business consultant Office
Filtrec s.p.a.

Como

Cadorago Town Hall
Gammatom s.r.l. - 2024

Cremona

Agrisafe s.r.l. - Consulenze tecniche e polizze del settore agricolo - 2024

Ferrara

N.A.T.O. Detachment Office

Firenze

Zenith Assistance Association
F.I.G.C. - Italian football federation

Genova

Erg Services s.p.a. Office
Liguria Digitale Office

La Spezia

Italian Navi

Latina

Gaeta Town Hall

Milano

Idrotermica Sanitaria - Bathroom furniture Dealer
Viar Oil Pipeline Valves Production Company
Pandora Jewellery
Banca Etica Milano
Armani Hotel Offices
Publimethod s.p.a. - Advertising bartering Company
Saccon Gomme Office
MSC Crociere s.p.a - 2024
Nuova sede studio associato Wegal - associazione tra avvocati e studio associato Carnà & Partners - 2025
Nuova sede Mare s.p.a. - 2025
Coccia Costruzioni - 2026

Modena

Edil Cam s.r.l. - Building construction Company

Mestre

Bitron s.p.a. - Research Company

Monza

Ioppolo business consultant Office

Napoli

Dima s.p.a. - Walt Disney dealer

Novara

Sorim Construction Company
Grassi Gomme - Tyres Company
Carlo Nobili s.p.a. Rubinetterie

Padova

Pettenon Cosmetic Company
Giuseppe Zagolin Office
Best Western Padova Hotel
Vacutest Kima s.r.l. - Medical Industry
Green Box - Industrial Chillers
Alida Srl Shoe Factory
Comune di Casalsérugo

Pavia

Assitalia Insurance

Pescara

Notaio Trave Manuel - 2024
EPAC S.R.L.- impianti fotovoltaici, interventi di riqualificazione energetica e soluzioni costruttive - 2026

Pistoia

U.S. Pistoiese 1921
Sirim Investimenti s.r.l. - Real estate Agency

Pordenone

Police Head - Quarters Immigration Office
Super Beton Construction Company
Veneto Banca Office
Clinica MEDE - Medical Studio
Dal Zin Accounting Firm
Arredamenti Martinel

Ragusa

Elisicilia s.r.l. - services for the aviation industry
Sud Express Autotrasporti - Transport Company
Multipla Coop - Company Services
Multifidi - Financial Services

Reggio Emilia

Zenit Group Srl/Sushiko Italia s.r.l. Development, Marketing, Management System

Roma

Ghiaia Ponterosso Construction Company
Record Office
ENEA Alternative Energy Corporation
Vatican's Offices
RAS Insurance
Sky Offices
Saccucci Lawyer Office

Promoimpresa s.r.l. - work formation
Lupinacci & Cassano Lawyer Office
IRBM Science Park s.p.a. - Biotech and pharmaceutical sector
Traslochi CD Removals s.r.l. - transport company
EIT RAWMATERIALS CLC SOUTH S.R.L. - alternative materials energy Company
Ministero dell'Economia e delle Finanze
Concessionaria Autostar
Corte Dei conti
Comando Operativo di Vertice Interforze (COVI) - 2024
Sidief s.p.a - 2024

Rovigo

Rinol Italia Research & Technology s.r.l. - industrial flooring and aesthetic coatings Company

Salerno

Galdieri petroli - 2024
Studio Associati Landi s.t.p.r.l. - 2024

Siracusa

Erg Services s.p.a. offices

Trento

Altea Software Company

Treviso

Castelfranco Hospital
Spironelli Iveco Service
Stelbi Hydro-Sanitary Production Company
Fornaci Calce Grigolin Construction Company
Gracis Lawyer Office
Chamber of Commerce
M.S.P. associated Lawyers Office
SAI Fondiaria Insurance Company
Agos Trucks dealer
Saccon engineering Office
Casa Vinicola Bosco Malera -wine producer
Centro Medico San Biagio s.p.a. - Medical Offices
Vi.V.O. Cantine Sac
Oro Contante
Compro Oro
Saiel photovoltaic systems
Prealpi bank new site
Ability Group - Medical Furniture
OTL - Electrical Kart Company
WABi Lab. Snc - Communication Company
WOM Adv - social media marketing, web design and photo studio
F.L.F. Iveco Service
OTL Italia s.r.l. - Electro Kart Production
Trafilerie Industriali - Steel Processing Company
RAS Insurance agency
Green Style s.r.l. Offices
Centro Medicine Integrate s.r.l. - Medical studio
Cappelli Medical Studio
De Chigi Colmagro Carlet Vendramelli Studio- Accountant Office
Lazzarin Caffè Headquarter
Proplastek s.r.l. Plastic Molding Company
Nicoletta Mammucari Notary Offices
Corbanese Impianti s.r.l. Offices
Biemmereti s.p.a. Offices
Doal s.r.l. Offices

Ivanik s.r.l. Offices
Loran S.r.l.
Antica Coloreria Camolei S.r.l.
Nicros S.r.l. - 2023
Studio Emme7G - Studio legale tributario e cons. Azienda - 2024
Clinica Veterinaria Strada Ovest s.r.l. - 2024
Skymatik s.r.l. - 2024
Fassa s.r.l. - 2024
Collegio Salesiano Astori - 2024
DB Mech s.r.l. - 2024
Bonaventura Express - 2026

Torino

Domino Infissi s.r.l. - 2024
TRA.MA s.r.l. - 2024

Trieste

Perri Notary Office

Udine

Udine Stadium
Ca' D'oro s.p.a. Marble Processing Company

Varese

Viar Oil Pipeline Valves Production Company
Monteleone Notary Office

Venezia

Umberto I Hospital
Prodal s.r.l. - Frozen Food company
Atlantico Hotel
Consaf Assurance Business Financial Company
AZ Group - Real Estate Agency
Friul Rubber s.r.l.
Impertek s.r.l.
Foscarini S.p.a.
Green Solutions s.r.l. - 2023

Vicenza

Frighetto furniture Company
Viktoria Consulting Insurance Company
Zeta Farmaceutici s.p.a. - Medical Industry
Carretta&Faccio Office - Transport Company
Menin s.r.l. - 2024

EUROPE

BELGIUM

Zonnebeke
Poppies

CROATIA

Puska
GPP MikicGroup

FRANCE

Paris
Louis Vuitton - Galeries Lafayette's
Socota Group

Quimper

Rochebobois

Marseille

Ambassade du Brésil à Marseille

IRELAND

Dublin
Dublin University

MONTENEGRO

Budva
Townhall

ROMANIA

Bacau
Eldomir
Hurghis

SERBIA

Belgrado
Mobtel Buildings

SWITZERLAND

Berne
Israeli Embassy

Lugano

IHD consultants

UK

London
My Doll Best Friend Ltd Shop

MIDDLE EAST

BAHREIN

Manama
Al Manamah Infinity Concessionaire Cars
Infinity - Concessionarie cars

JORDAN

Amman
Arab Potash Co. Semi-Government Org.
Al Sarraf Group
Arabatec Jardaneh Engineers and Architects
Bustamji motors
IB Law
I.B.C. Bank
Nestle Water
King Academy
Raya Jet
Royal Court
Bank Al-Ethiad
Zakko Group

KUWAIT

Hawally
Seif Palace Emiri Diwan Offices Bldgs
Bayan Palace
Kuwait city
Ministry of Complex

OMAN

Muscat
Authority for Electricity Regulation

QATAR

Doha
Al Sharq Low Rise Hotel
Civil Aviation
Curio Hotel
Club House
Hilton Hotel
HEC Paris - Tornado Tower
Sheraton Hotel
Al Jaber Engineeting Group
Hazim Brothers for Construction
The Lusail Office Tower COM 18
Durkhan Air Base
GWC Qatar Logistic
The View Hospital
The View Hospital
Qatar University Higher Administration Building
Dunkhan Bank (DBHQ) - 2025
Rawdah - 2025
Qatar anti-doping - 2025
Media City Qatar (MCQ) - 2025
Real Estate Regulatory Authority (RERA) - 2025
Lusail City
Korean Medical Center

SAUDI ARABIA

Al Khobar
Tecnicas Reunidas Saudi Arabia
Ansab Head Office
Damman
Abdoulla Fouad Holding Company Medical Supplies Building
King Fahd International Airport (KFIA) - 2025

Jeddah

Huda Lighting
Effat College
King Abdullah University
Dr. Munir Dental Clinics
Madza
Raed Saud College
Al Tayar Group
Saudi Airline
Ram Al Mabani LTD
SMB - Saudi Business Machine - 2024
Pylons - 2025

Riyadh

Raya Abdul - Moute Al - Misi Est. Trading Company
Aptec
HRDF - Human Resource Development Found
Novotel - Al Anoud Vip Section
ABB Group
Ministry of Commerce
Ministry of Labour Council of Cooperative Health Service
Security Control Company
Malaz Capital
Al Elm Information Security Company
Unified Real Estate Development Co.
Council of Saudi
Wire Filter
Sapphire For Medical Services
Human Resources Development Fund
Saudi Industrial Investment Group
Aramco Trading Company
SITCO - Saudi Information Technology Company
Tarfeeh
Degree Design
BAB - Bank Al-Bilad
Mawakeb
RICC - Riyadh International Catering Company
Taqa
STC - Saudy Telecom Company
Dallah HQ
The Walk
NOK SOK - NEOM
LVI Masharee
National Security Center (NSC)
Human Capability Development Program - HCDP
SDAIA Riyadh - Saudi Authority for Data and Artificial Intelligence
NDMC - National Debt Management Center
MOMRAH - Ministry Of Municipal Rural Affairs & Housing
Financial Academy Headquarter Located On Floor 3-8, Parcel 2.07 KAIFD
Vip Terminal Majmaa Airbase
Graduation Hall Majmaa Airbase
Ministry Of National Guard
UANOC Olympic Committee
Saudi National Bank (SNB)
MOS - Ministry Of Sport - 2024
Monsha'at - 2024
King Abdulaziz City of Science and Technology (KACST) - 2024
Saudi Company for Visa and Travel Solutions (SVTS) - 2024
Tamayouz Business Service - 2024

Aptech Computer Education - 2024
Real Estate Registry (RER) - 2025
Ministry of Energy (MOE) - 2025
Gener Court of Audit (GCA) - 2025
Saudi Technology and Security Comprehensive Control Company (TAHAKOM) - 2025
Al Khabeer new office - 2025
The Strategy Management Office (SMO) - 2025
King Salam Air Base Facilities in Dirab - 2025

UNITED ARAB EMIRATES

Abu Dhabi
Ambulatory Healthcare Service
Gasco
Union Railway
National Bank of Abu Dhabi
Nova Systems Engineering - Fire & Safety services Company
Presidential Guard Command
Ministry of Justice

Dubai

Police Department
Ministry of Interior
A.D.G.D.C. Gas Development Company
Zener Electronic Service LLC - Electrical and electronics Company
MOI - Ministry Of Interior - 2024
DIFC – Dubai Investment Financial Center - 2024
Kezad Group - 2024
Wio bank - 2025

Sharja

Sharja Municipality

AFRICA

BENIN

Cotonou
Italian Embassy

ETHIOPIA

Addis Abeba
National Oil Ethiopia Plc

GABON

Libreville
Custom Manager Office

IVORY COAST

Abidjan
Bicici BNP Paribas

LIBYA

Benghazi
University Of Benghazi

MADAGASCAR

Antananarivo
Jovenna Petroleum
TELMA - Madagascar Telecommunications
BFV Bank
Socota Group

MAURITIUS

Socota Group

MOROCCO

Rabat
Ministry of Interior
Ministry of Finance
Ministry of Justice
Ministry of Tourism

Casablanca

Bymar

TOGO

Lomé
Pia Togo (Platform industrial Adetekope)

OTHERS

AUSTRALIA

Sidney
Toyota Sydney

MALDIVES

South Male Atoll
Ithaafushi Maldives Resort

MONGOLIA

Ulaanbaatar
TOD Tower

RUSSIA

Ekaterinburg
Legislative Assembly
Moscow
Don - Stroy Building
Siberia
Omsk Petroleum Refinery
San Petersburg
Constitutional Court of the Russian Federation
Fominsk
000 Naramonilit

TRINIDAD

Port of Spain
Advanced Foam Inc. - Foam packaging and decorative Company
Jaids Interiors offices - Interior designer
Jagdeo Singh Lawyers Office

USA

Fort Lauderdale
Sun Air - Electronic Company
Miriam Moore Design Studio

OUR PRODUCTS

Executive collection
Working system
Common areas
Bespoke conference tables
Storage
Reception
Wall partitions
Lighting
Profmood complements

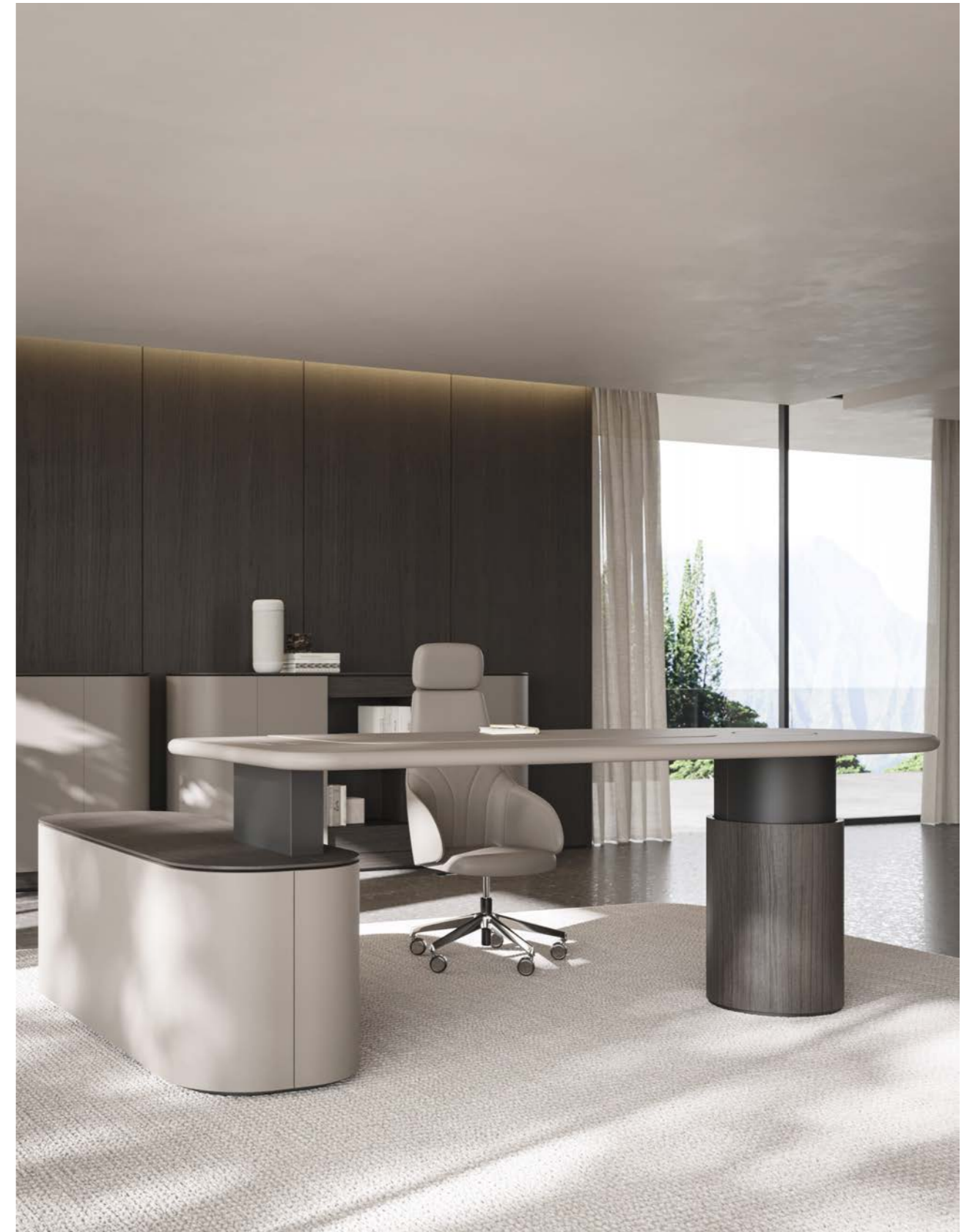
EXECUTIVE COLLECTION

Flow
Dea
Block
Block Élite
Sessanta
Slim
Entry
Extralight

FLOW



DEA adjustable





DEA marble edition



DEA wood edition



DEA colour edition



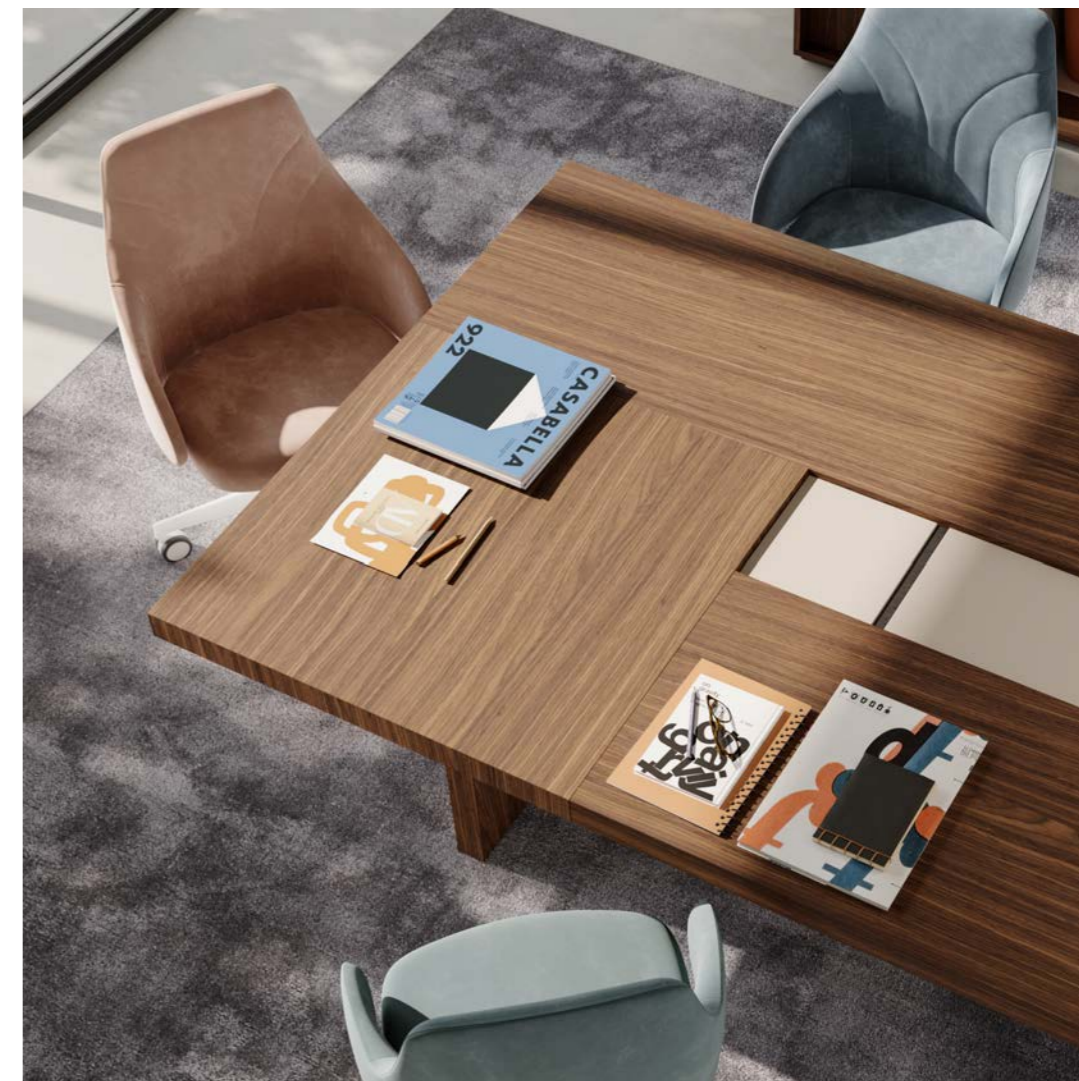
BLOCK



BLOCK ÉLITE



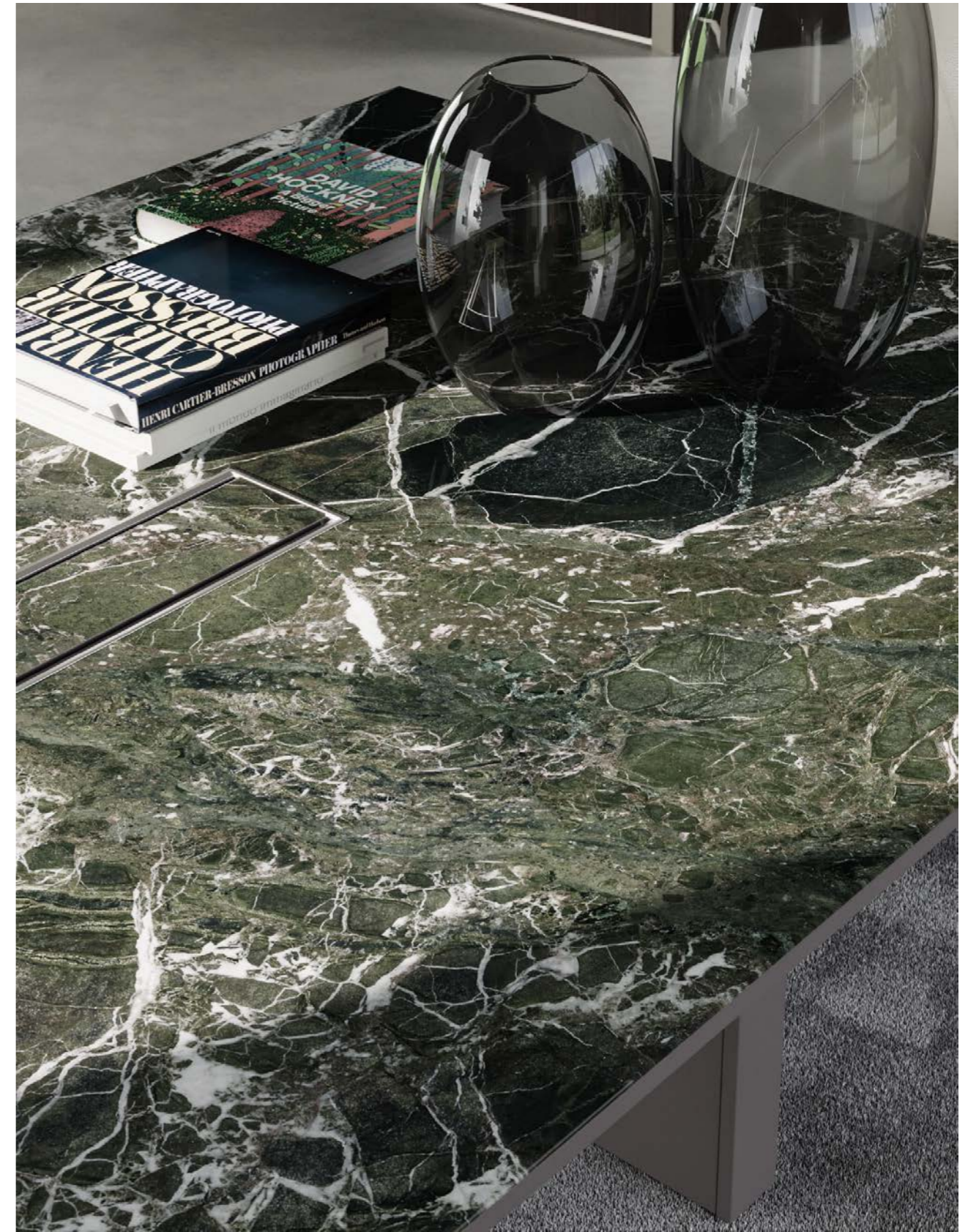
SESSANTA



SLIM



SLIM



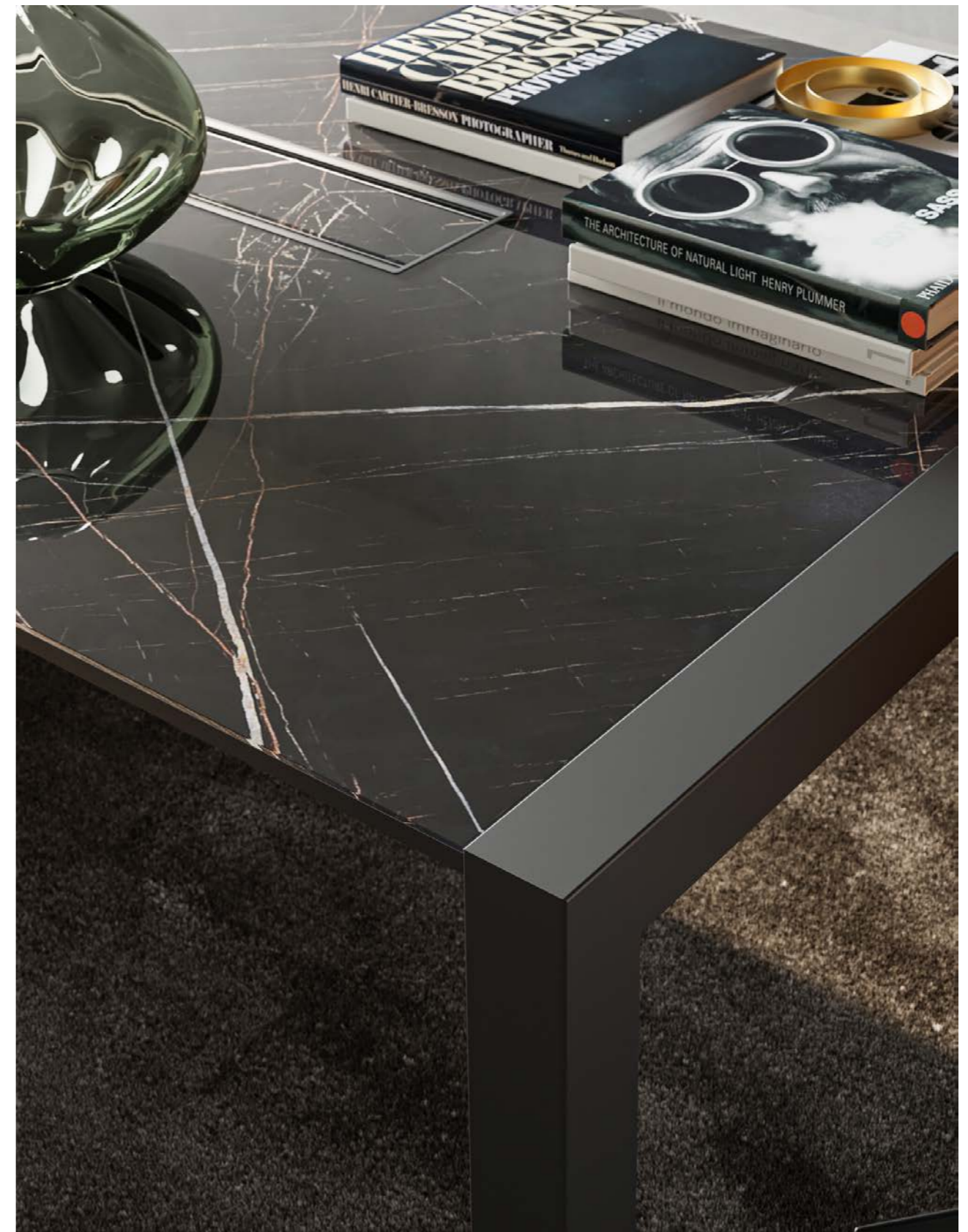
ENTRY



EXTRALIGHT



EXTRALIGHT



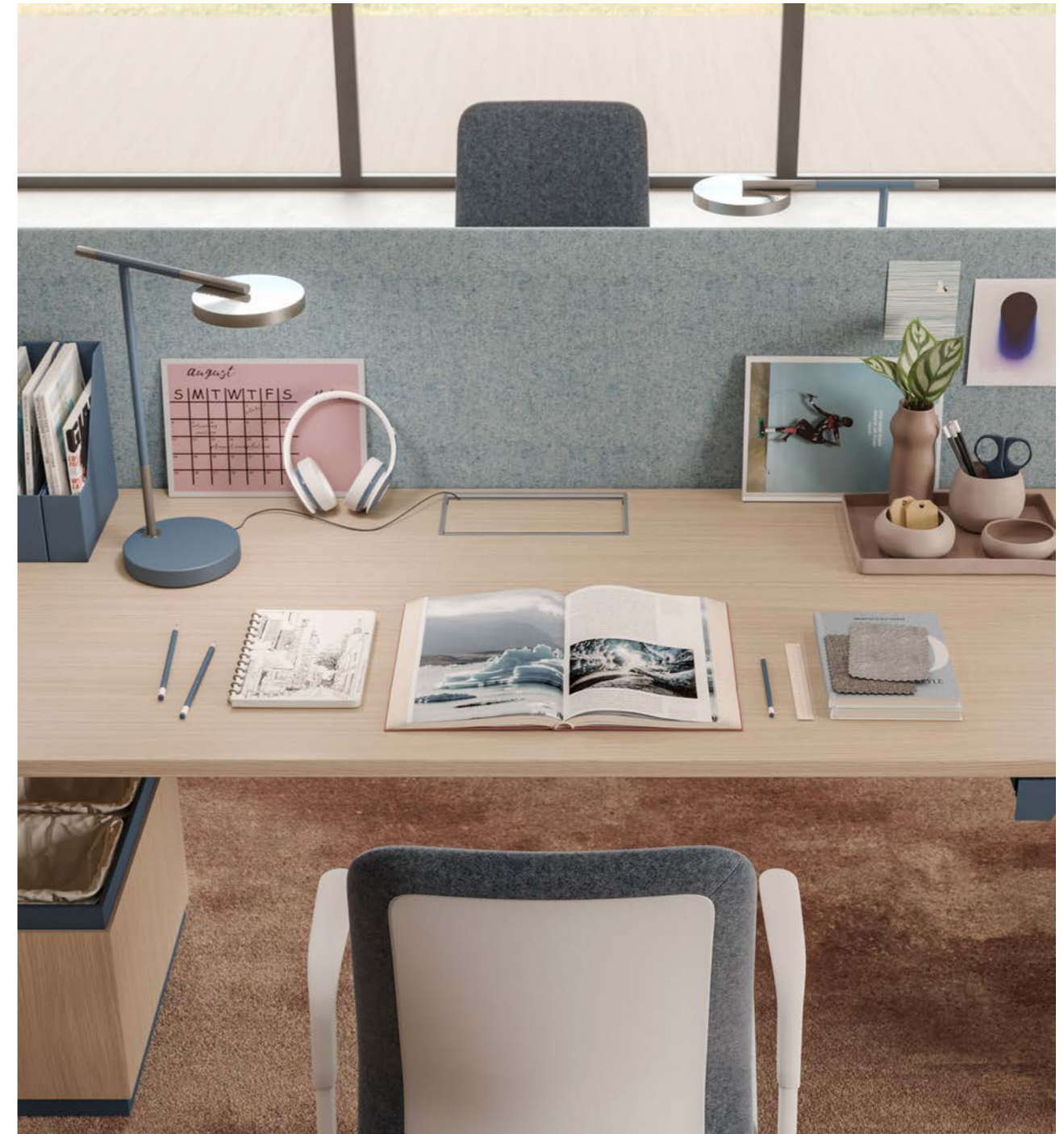
WORKING SYSTEM

Zero
Dieci 2.0
Dodici
Openwall
Openspace

ZERO MANAGER



ZERO WORKING



DIECI MANAGER



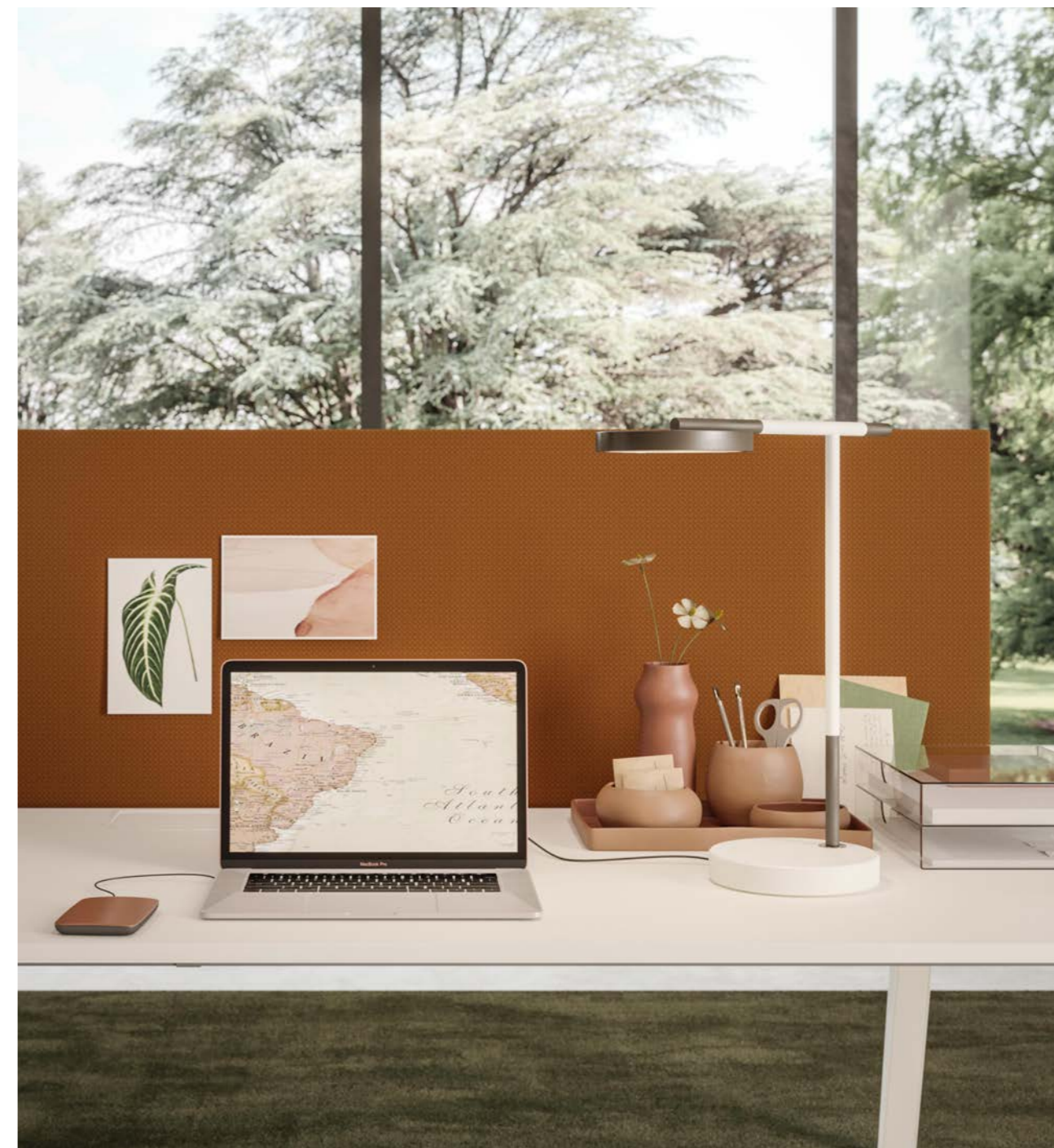
DIECI WORKING



DODICI MANAGER



DODICI WORKING



OPENWALL



OPENSOURCE



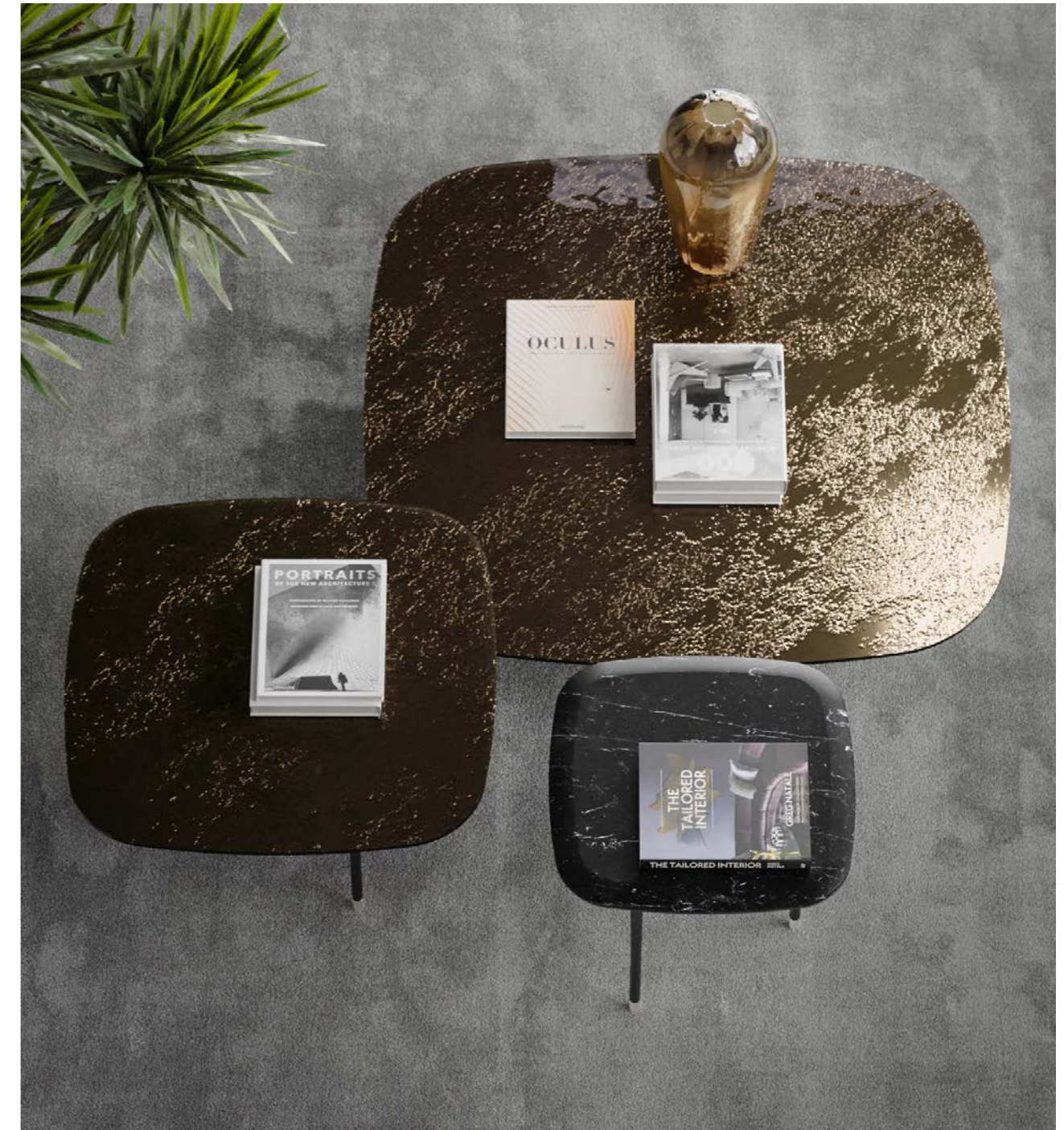
COMMON AREAS

Table
Diana

TABLE



DIANA



BESPOKE CONFERENCE TABLES







STORAGE

Profbox
Profslide
Profcase

PROFBOX



PROFSLIDE



PROFCASE



RECEPTION

RECEPTION



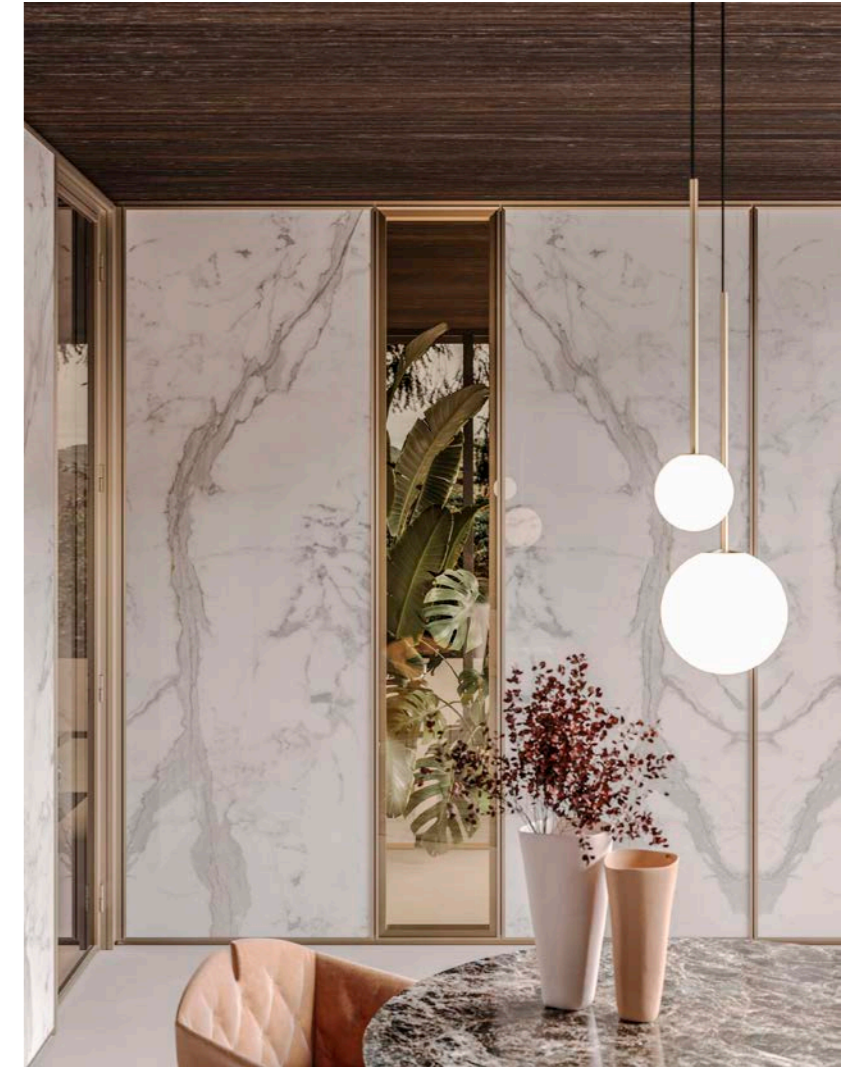
RECEPTION



WALL PARTITIONS

Profwall

PROFWALL



PROFWALL



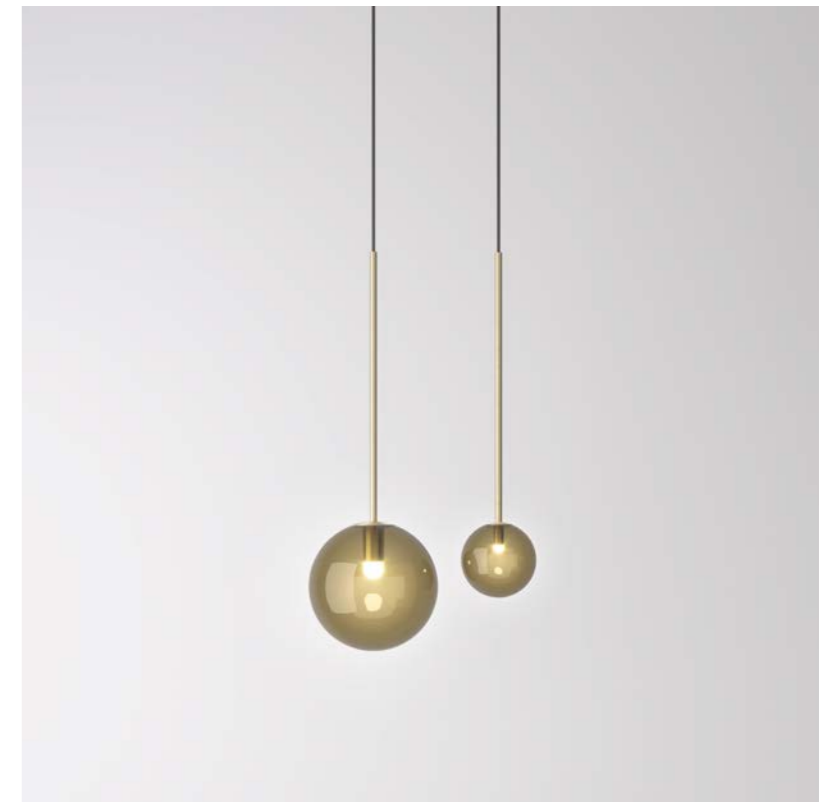
PROFWALL



LIGHTING

Grace N°1
Grace N°2

GRACE N°1



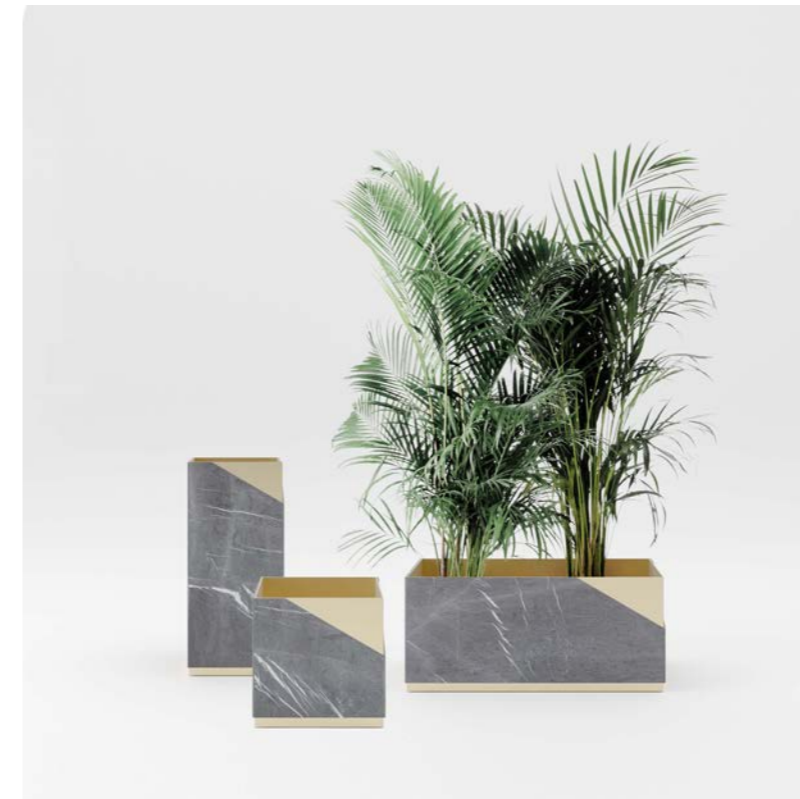
GRACE N°2



PROFMOOD
COMPLEMENTS



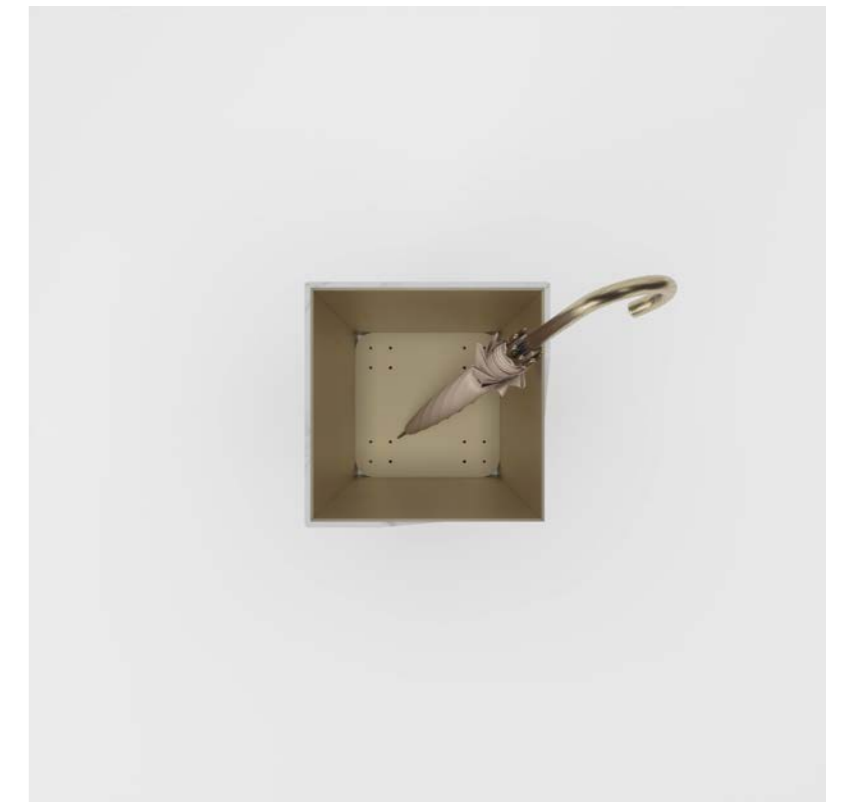
LOUISE



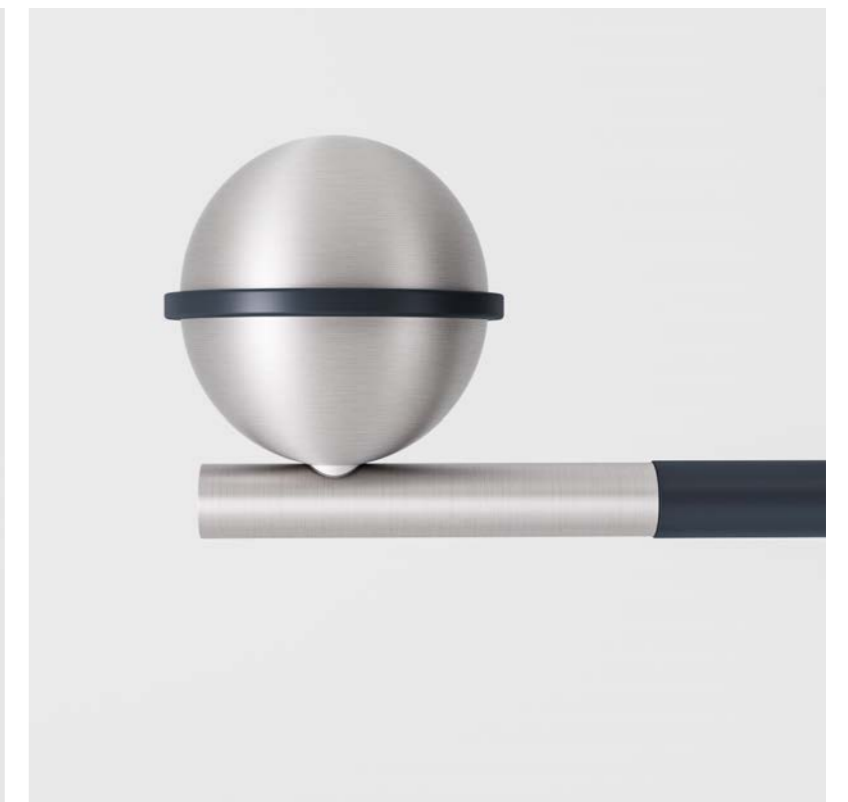
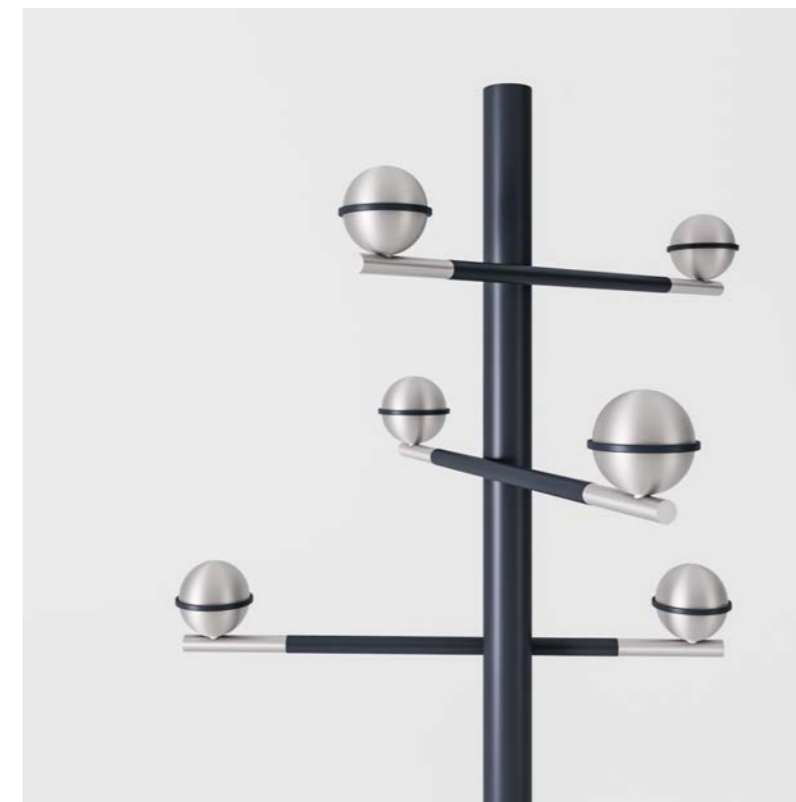
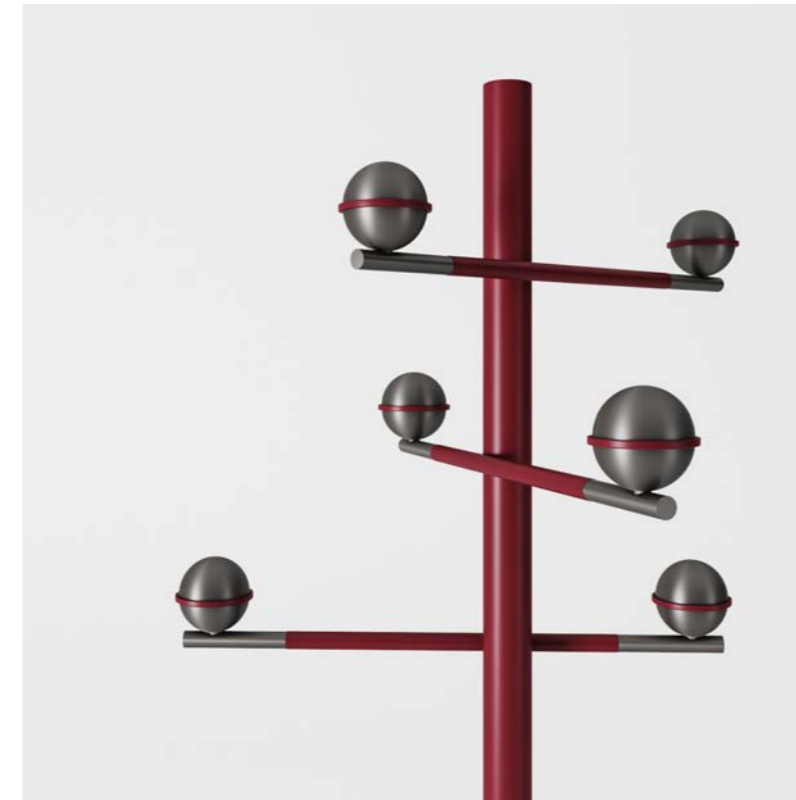
LOUISE



LOUISE



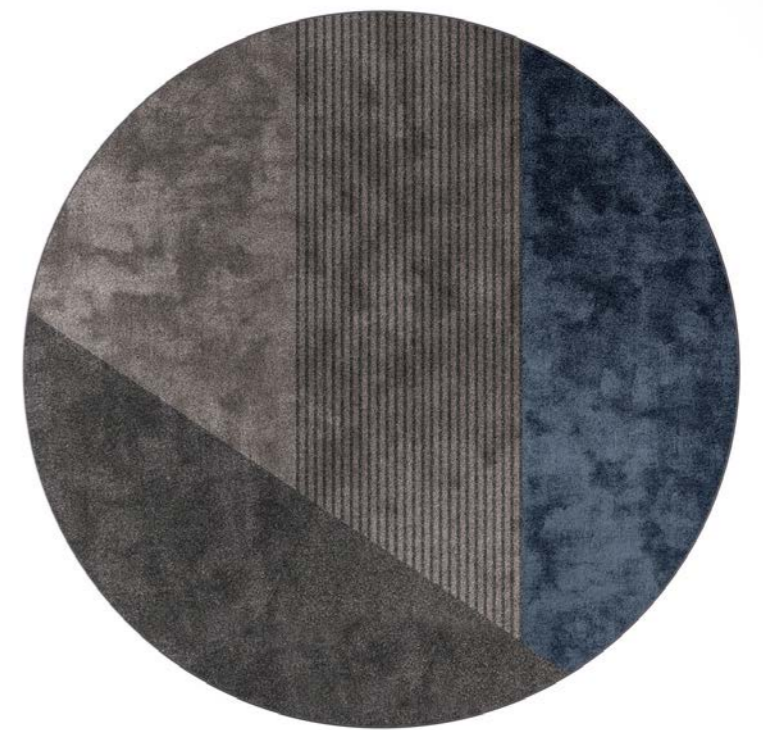
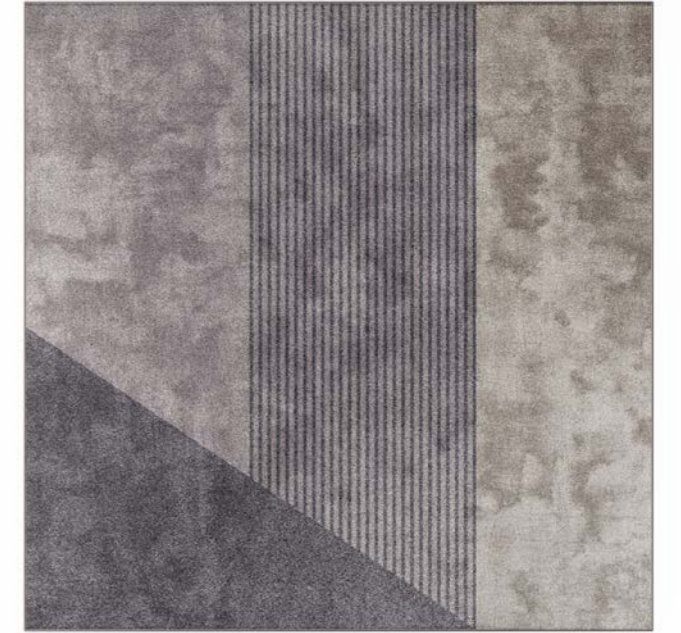
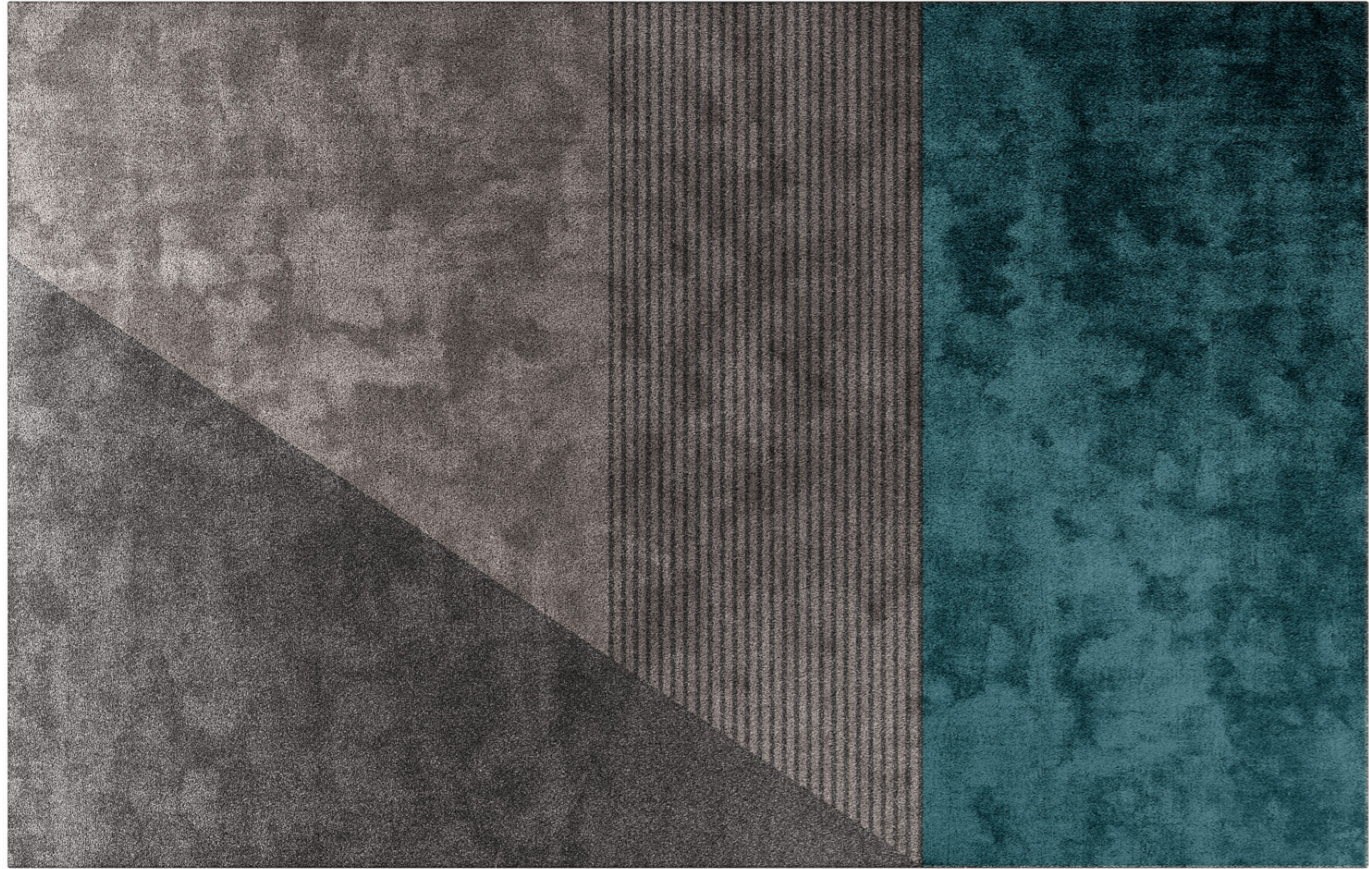
JANE



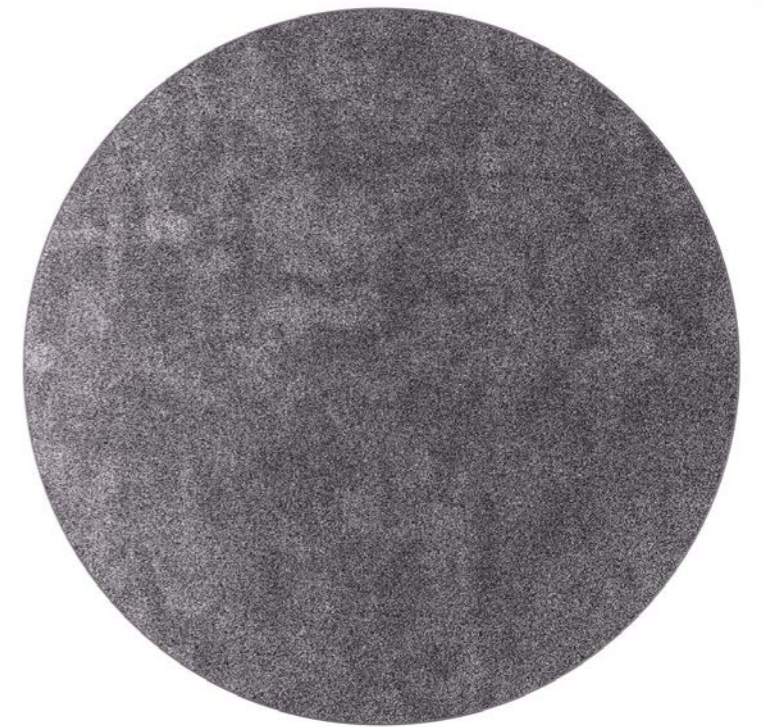
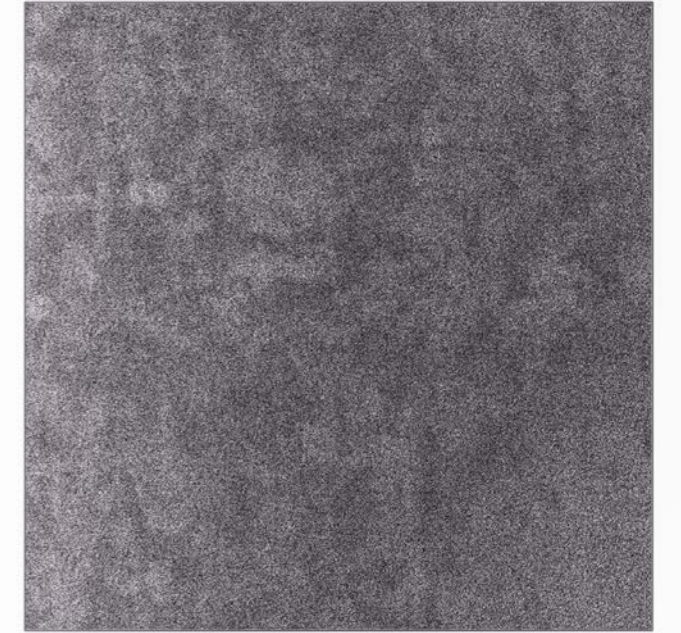
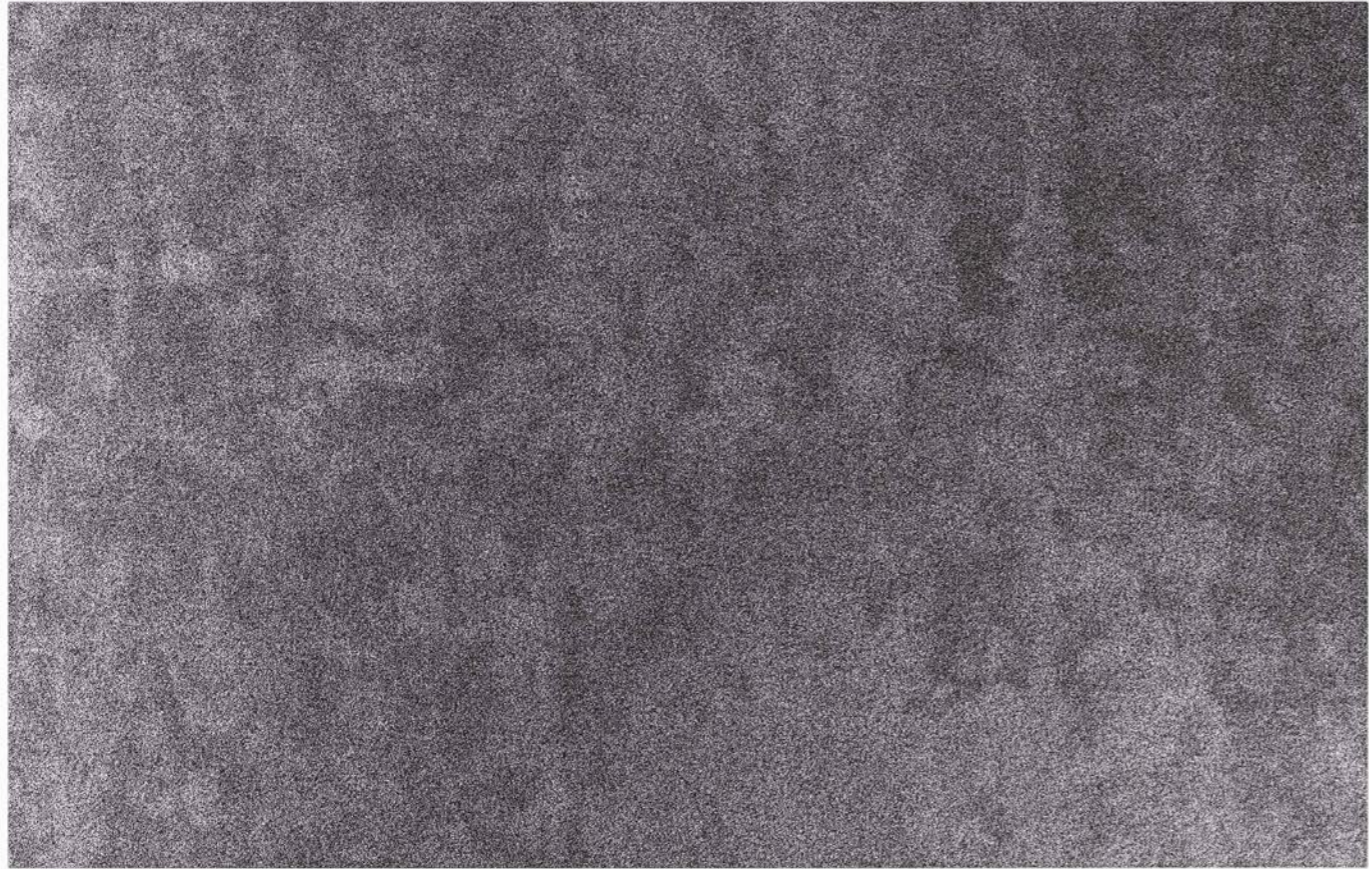
SHADE



RAY



SHINE



TWINS



UNI PROF products are according to UNI standard



CEE standard



low emission of formaldehyde



production process that respects the ambient



energy from 100% renewable sources.



GESTIONE AMBIENTALE VERIFICATA IT-05237



The mark of responsible forestry

**PR
OF**

PROF srl
Via Cao de Villa 6/A
Località Falzè di Piave
31020 Sernaglia della Battaglia, TV / Italy
T. +39 0438 903190 F. +39 0438 903228
p.iva - cod. fisc IT03134570260
www.proffice.it info@proffice.it

