

# PROF OFFICE

company profile



PR  
OF

# PROF OFFICE

company profile



**PR  
OF**





# COMPANY

SINCE  
1995

Dall'esperienza nel settore del mobile, nel 1995 nasce Prof, una realtà industriale familiare che produce sistemi d'arredo per ufficio, fortemente radicata nel distretto del mobile del nord est italiano. In questi vent'anni il percorso di sviluppo e crescita economica di Prof l'ha condotta ad affacciarsi al mercato internazionale, contribuendo a diffondere la qualità del design italiano nel mondo.

Avvalendosi della consulenza di architetti e designer, l'azienda ha consolidato la propria identità e ampliato l'offerta di prodotti. Partendo dalle collezioni direzionali, ha sviluppato in seguito sistemi operativi, soluzioni per le reception e le sale riunioni, fino alle pareti divisorie e attrezzate. Questo oggi le permette di proporre soluzioni di arredo complete e personalizzate per tutti gli ambienti di lavoro.

Prof was born in 1995 from the furniture sector experience, a family industrial reality that produces office furniture systems, deep-rooted in the Italian north-east furniture district. In these twenty years, Prof economic route of development and growth allowed it to look out to the international market contributing to the Italian quality design diffusion in the world.

Taking advantage from architects and designer consultancy, Prof strengthened its identity and it widened the products offer. Beginning from the executive collections, it then developed secretarial systems, reception and conference rooms solutions, getting up to separating and equipped wall. Today, this allows it to propose complete and customized furnishing solution for any working site.



# OUR HISTORY



Valter Zanco fonda Prof, azienda specializzata nella produzione di mobili per ufficio.

Valter Zanco founds Prof, a company specializing in the production of office furniture.



I figli Luana, Giorgia e Vanni Zanco entrano nel management dell'azienda.

His sons Luana, Giorgia e Vanni Zanco join the company.



Trasferimento nell'attuale sede di Falzè di Piave, TV Italy. Nascono le collezioni direzionali Spider, Miura e Daytona e operative Dieci, Uno e Zero.

They moved to the current headquarter in Falzè di Piave, TV Italy. Spider, Miura and Daytona executive and Dieci, Uno e Zero operative collections are born.



Inizia la collaborazione con Rmdesignstudio. Nuova immagine e prodotti.

The collaboration with Rmdesignstudio starts. New corporate image and products.



Nasce la collezione operativa Dodici.

Dodici operative collection is born.



Prof compie 20 anni e lancia il nuovo marchio green per affermare il suo impegno a tutela dell'ambiente.

Prof celebrates twenty years and launches its new green mark to confirm its commitment towards the environment.

1995

2000

2005

2009

2013

2015

1998

Nascono le collezioni direzionali Giove, Classic, Rubino, Leader Premiere, Diamante e operative Prodigio, Profilo, Clio e Opera.

Giove, Classic, Rubino, Leader Premiere, Diamante executive and Prodigio, Profilo, Clio and Opera operative collections are born.



2001

Nascono le collezioni direzionali Slim e Fast.

Slim and Fast executive collections are born.



2008

Nascono le collezioni direzionali Block, Plano, Light e le pareti divisorie Profwall, per integrare gli arredi agli spazi.

Block, Plano, Light executive collections and Profwall partitions are born, that integrates office furniture and spaces.



2012

Inaugurazione del nuovo showroom aziendale di 400 mq. Ottenimento delle certificazioni ISO 9001 per la gestione della qualità e ISO 14001 per la tutela ambientale.

Inauguration of the new 400 sqm company showroom. Obtainment of the ISO 9001 for the quality management and ISO 14001 for the environmental management.



2014

Nasce la collezione direzionale Sessanta.

Sessanta executive collection is born.



2016

Nasce la collezione operativa Openwall.

Openwall operative collection is born.





Ampliamento della sede.  
Expansion of headquarter.



Nasce la collezione direzionale  
Extralight Executive Collection.  
Extralight Executive Collection  
is born.



Nasce la collezione Grace Luxury  
Lighting Collection.  
Grace Luxury Lighting Collection is  
born.



Nasce la collezione di appendiabiti  
Jane.  
The Jane coat stand collection is  
born.



Restyling della collezione manager  
e operativa Dieci.  
Restyling of the manager and  
working collection Dieci.



Restyling della collezione manager  
e operativa Dodici.  
Restyling of the manager and  
working collection Dodici.



Restyling della collezione manager  
e operativa Zero.  
Restyling of the manager and  
working collection Zero.

2017

2019

2021

2018

Nasce la collezione direzionale  
Block 2.0 Luxury Executive  
Collection.  
Block 2.0 Luxury Executive  
Collection is born.

2020

Nasce la collezione direzionale  
Slim Executive Collection.  
Slim Executive Collection is  
born.

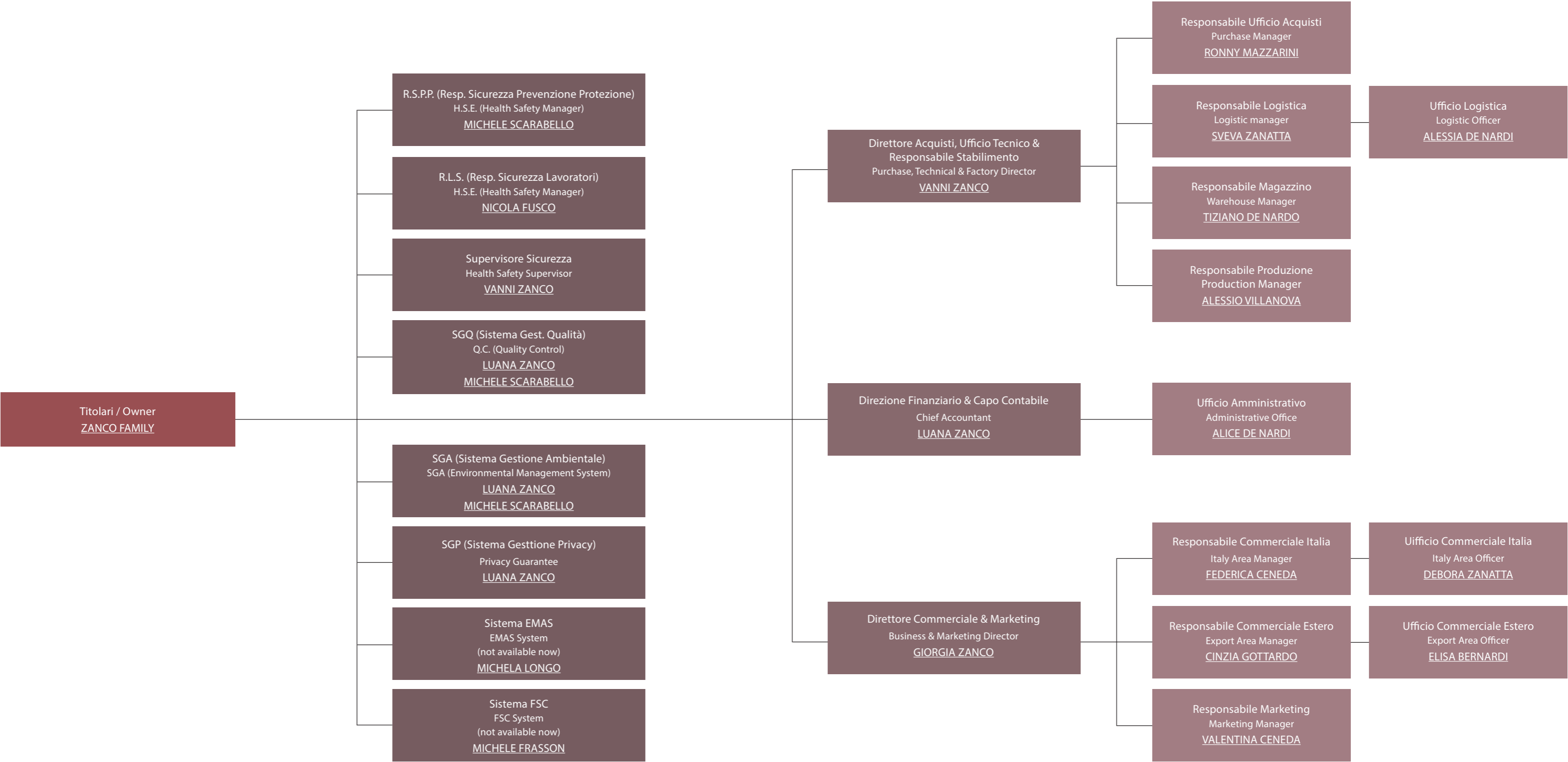
Nasce la collezione direzionale  
Entry Executive Collection.  
Entry Executive Collection is born.

2022

Restyling della linea di contenitori Profbox, Profslide e della libreria Profcase.  
Restyling of the Profbox, Profslide cabinet line and Profcase library.



# COMPANY STRUCTURE







6000 mq  
1000 mq SHOWROOM  
500 mq OFFICE  
4500 mq PRODUCTION



## HEADQUARTER

La sede di Prof, con lo stabilimento e gli uffici, si trova a Falzè di Piave, in provincia di Treviso e a 70 chilometri a nord di Venezia, in uno dei più importanti distretti produttivi del mobile d'Europa. Si sviluppa su una superficie totale di circa 8700 metri quadrati, di cui 3600 coperti.

Lo stabilimento, specializzato nella produzione di arredo per ufficio, è attrezzato per lavorazioni del legno, assemblaggio, imballo, magazzino e reparto spedizioni dei prodotti finiti.

La sede ospita gli uffici direzionali, commerciali, tecnici e amministrativi, le aree meeting dedicate all'accoglienza dei clienti e uno showroom di oltre 400 mq che espone tutte le collezioni di arredo per ufficio.

Nel 2017 è stato realizzato un ampliamento della sede di 1800 metri quadrati, di cui 670 destinati alla produzione, 330 agli uffici, 800 allo showroom.

Prof headquarters, with the plant and offices, is located in Falzè di Piave, in the province of Treviso and 70 kilometers north of Venice, in one of the most important industrial furniture districts of Europe. It spreads over a total area of about 8700 square meters, of which 3600 are covered.

The plant, specialized in the production of office furniture, is equipped to work in wood, assembly, packing, warehouse and shipping department of finished products.

The headquarters is home to the executive, sales, technical and administrative, the meeting areas for the reception of clients and a showroom of over 400 square meters, which exposes all the collections of office furniture.

In the 2017 it has been realized an expansion of 1800 square meters, of which 670 intended for production, 330 for the offices, 800 for the showroom.





## INDUSTRY 4.0

L'azienda produce unicamente nello stabilimento di Falzè di Piave, in provincia di Treviso e da sempre fonda la sua identità nei valori del massimo rispetto verso le persone, il territorio e le materie.

Il forte radicamento al territorio e quell'innata capacità del "saper fare" che ha saputo evolversi, grazie anche alle nuove tecnologie, hanno consentito a Prof di affermare e consolidare il proprio successo, continuando a coniugare tradizione e innovazione, adeguandosi ai nuovi cambiamenti sociali ed economici. L'organizzazione produttiva di Prof è orientata al "just in time e dell'industria 4.0", che permette di abbinare elementi quali affidabilità, riduzione delle scorte e un aumento della qualità e del servizio al cliente.

Tutta la filiera di Prof si sviluppa in Italia e principalmente all'interno del distretto produttivo di appartenenza, ove sono ubicati la grande maggioranza dei fornitori di materie prime e di semilavorati.

I prodotti sono interamente progettati e realizzati in Italia, per garantire uno standard di eccellenza costante.

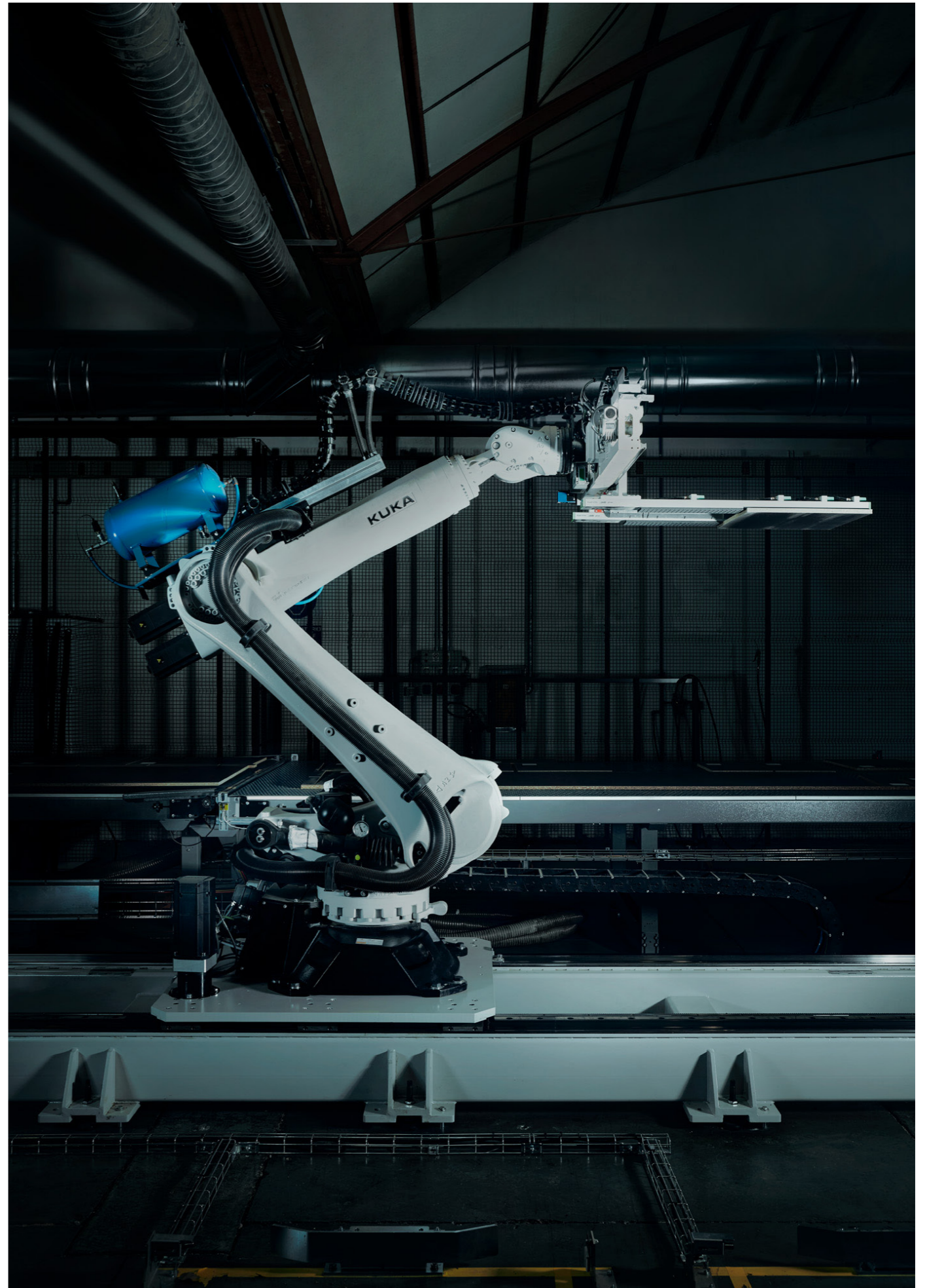
The company produces exclusively in the establishment of Falzè di Piave, in the province of Treviso and always bases its identity in the maximum values respect for people, the land and materials.

The strong local roots and that innate ability of "know how" that has evolved, also thanks to new technologies, have enabled Prof to affirm and consolidate its success, continuing to combine tradition and innovation, adapting to new social and economic changes.

The Prof's manufacturing organization is geared to the "just in time and industry 4.0", which allows you to combine elements such as reliability, inventory reduction and an increase in quality and customer service.

The whole chain of Prof develops in Italy, mainly in the manufacturing district of belonging, where are located the vast majority of raw materials and semi-finished products suppliers. The products are entirely designed and made in Italy, to ensure a standard of consistent excellence.







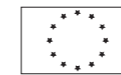


# HOW WE WORK

## DESIGN



MADE IN ITALY



In Prof ogni elemento d'arredo nasce dalla capacità di interpretare il continuo mutamento delle dinamiche negli ambienti di lavoro. La ricerca rappresenta da sempre l'elemento strategico nella politica di crescita aziendale e si esprime attraverso un Design Department interno, che opera a stretto contatto con i progettisti esterni ed è in costante aggiornamento con l'evoluzione tecnologica e normativa.

I prodotti Prof sono progettati e interamente realizzati in Italia nel pieno rispetto degli standard europei in materia di salute e sicurezza nei luoghi di lavoro.

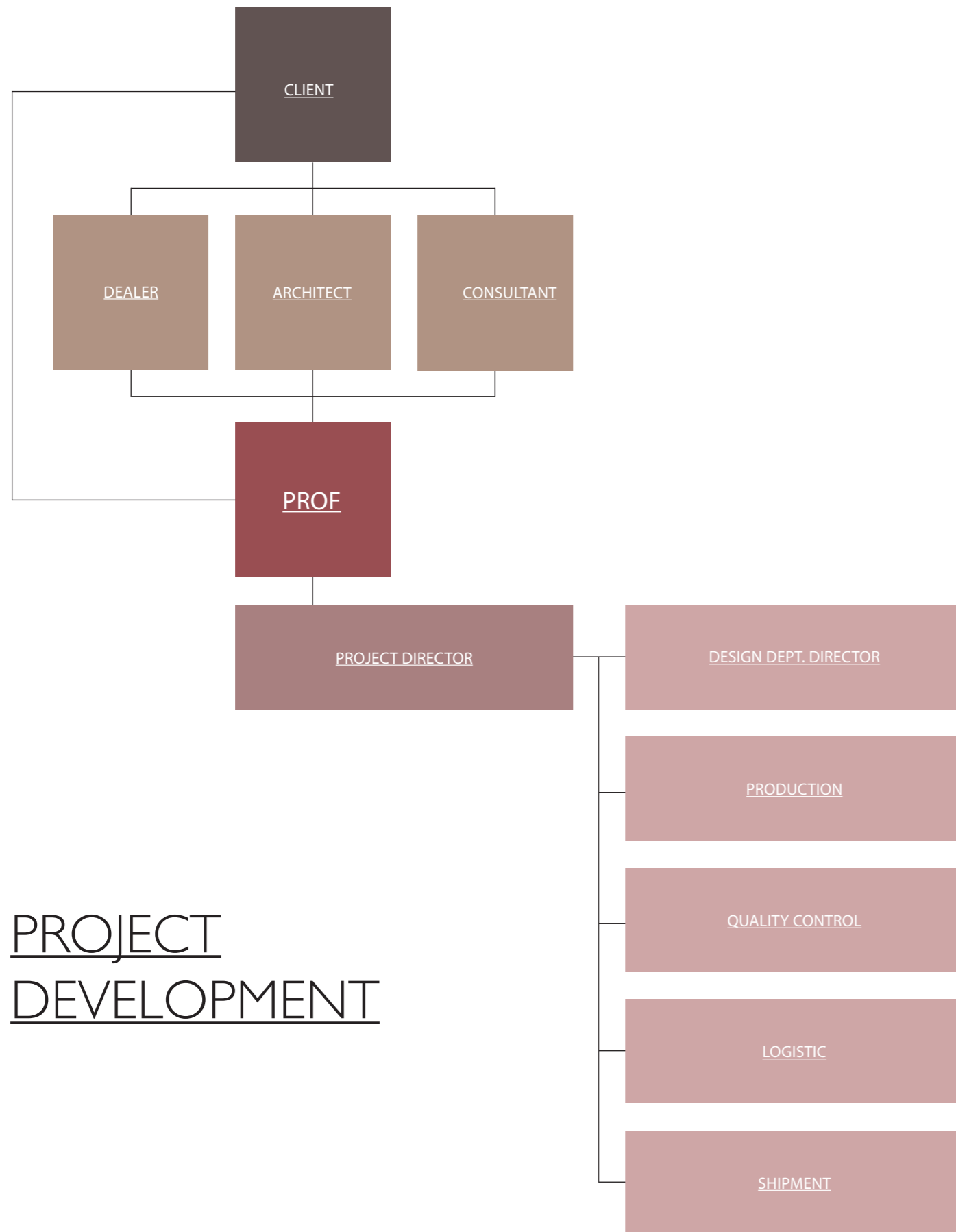
Per questo motivo le collezioni Prof si distinguono per l'elevato design, l'ergonomia e la funzionalità.

In Prof company, any furnishing element rises from the ability to understand the constantly changing of the working places dynamics. The research has always represented the strategic element of the company policy of business growth and it expresses through an internal Design Department working closely in contact with external designers and it is constantly updating with the technological and legislative evolution.

Prof models are entirely designed and manufactured in Italy, in full compliance with European standards concerning the health and safety in the workplace.

For this reason, Prof collections stand out for the high design, the ergonomics and the functionality.





## PROJECT DEVELOPMENT

## PROJECT CONSULTING

Prof offre un servizio di progettazione e consulenza completa che comprende l'analisi delle richieste del committente, lo studio del layout con proposte di arredo mirate e personalizzate attraverso disegni tecnici e render fotorealistici.

Prof provides a comprehensive design and advice service including the analysis of the customers' requests, the layout study with targeted and personalized furnishing proposals with technical drawings and photorealistic renders.

## CUSTOMIZATION

Prof è in grado di proporre e realizzare un servizio di customizzazione del prodotto di serie: dalla produzione di pezzi fuori misura, alla ricerca di nuovi materiali e finiture, alla realizzazione di campionature e prototipi. Grazie alla sua versatilità produttiva, Prof ha sviluppato negli anni una competenza specifica nelle forniture su misura che vanno dai progetti di piccole-medie dimensioni fino a grandi realizzazioni personalizzate.

Prof can propose and make a customized service on standard production models: from the production of oversized items, to the search of new materials and finishes, up to the carrying out of samples and prototypes. Thanks to its production versatility, over the years Prof has developed a specific expertise in the custom-made supplies going from small-medium size projects to great personalized creations.

## AFTER-SALES SERVICE

Attraverso il sistema certificato UNI EN ISO 9001 per la gestione dei prodotti non conformi e dei reclami, Prof ha il costante controllo dei problemi riscontrati in fase di montaggio e di utilizzo. L'azienda offre un servizio dedicato all'assistenza tecnica e post vendita che garantisce informazioni complete e fornisce cambi e riparazioni.

Through the UNI EN ISO 9001 certificate system for the management of non-compliant products and complaints, Prof has got the continuous control of the problems encountered during assembly and use phases.

The company provides a service for the technical and after-sales assistance with complete information, changes and repairs.



## BESPOKE PRODUCTS

La flessibilità produttiva di Prof permette, oltre alla produzione in serie, la realizzazione di progetti definiti su misura su specifiche esigenze del committente.

Il nostro design department è in grado di supportare il cliente o il progettista nello sviluppo e nella realizzazione di prodotti unici, sia nelle soluzioni funzionali che estetiche, con finiture totalmente personalizzate.

Un'attenta consulenza in ogni fase di sviluppo: una progettazione mirata, con un'accurata selezione dei materiali e con un'estrema attenzione ai dettagli, che si concretizza nella realizzazione, seguita passo dopo passo fino all'installazione finale.

La produzione è interamente sartoriale, secondo il metodo bespoke: su richiesta e su misura.

Prof production flexibility allows, in addition to series production, the realization of projects defined custom made to the client's specific needs.

Our design department is able to support the client or the designer in the development and production of unique products, both in functional and aesthetic solutions, with totally customized finishes.

Careful consultancy at every stage of development: a targeted design, with a careful selection of materials and with the greatest attention to detail, which culminated in constructing, followed step by step until the final installation.

The production is entirely tailored according to the bespoke method: on request and custom made.





Per rispondere alla crescente competitività nei mercati internazionali attraverso il miglioramento della soddisfazione e della fidelizzazione dei clienti, la razionalizzazione dei processi produttivi interni, Prof ha ottenuto nel 2012 la certificazione ISO 9001:2008. L'adozione di un sistema di gestione per la qualità rappresenta per Prof una decisione strategica che consente di raggiungere obiettivi aziendali sempre più concreti.

In un mondo costantemente alla ricerca della qualità e sempre più sensibile alle problematiche ecologiche, Prof mette in campo la massima professionalità nel progettare e produrre mobili per ufficio rispettando l'ambiente. Dalla materia prima accuratamente selezionata, all'intero processo di trasformazione e imballaggio fino allo smaltimento, tutto è finalizzato alla salvaguardia della salute ed al risparmio energetico.

Prof infatti, utilizza pannelli certificati E1 in rispondenza alle normative europee in materia di emissione di formaldeide sia per il prodotto grezzo che per il nobilitato.

Inoltre ciascun pannello è marchiato dal Consorzio Pannello Ecologico a garanzia che i semilavorati sono prodotti mediante il reimpiego del legno con un processo produttivo che non comporta l'abbattimento di alberi.

L'ottenimento nel 2012 della certificazione ISO 14001:2004 dimostra l'impegno concreto di Prof nel voler stabilire un proprio sistema di gestione ambientale che regola l'impatto ambientale delle attività produttive e ne ricerca sistematicamente il miglioramento.

Nel 2015 in concomitanza con i venti anni dell'azienda, Prof lancia il suo nuovo marchio green per riconfermare e rendere riconoscibile il suo impegno verso il tema della sostenibilità ambientale, come parte integrante della propria attività e del proprio processo di crescita produttiva.

Nel 2017 l'azienda riconferma la propria strategia "eco-friendly" confermando i propri valori di "sustainable" e "responsibility" e fa lo appoggiandosi ad un nuovo gestore di energia elettrica (Dolomiti Energia) proveniente da fonti rinnovabili al 100%.



UNI



# WE CARE

# QUALITY AND ENVIRONMENT

In order to answer to the increasing competitiveness of the international markets through the improvement of the customer satisfaction and loyalty, the rationalizing of the internal producing processes, Prof attained ISO 9001:2008 certification in 2012. The adoption of a quality management system represents for Prof a strategic decision giving the possibility to achieve business objectives more and more concrete.

In a world steadily looking for the quality and increasingly sensible to ecological problems, Prof puts in place the maximum expertise in the office furniture design and production while respecting the environment. Starting from the carefully selected raw material, the whole process of transformation and packaging up to the disposal, all aims at the health safeguarding and at energy saving.

In effect, Prof uses certified E1 panels according to the European regulations regarding formaldehyde emission for both the raw product and the melamine.

Then, any panel is marked from the Ecological Panel Consortium guaranteeing that the semi-finished products are produced by the reuse of wood with a manufacturing process that does not involve the felling of trees.

The obtainment of the ISO 14001:2004 certification in 2012 certifies Prof concrete commitment in establishing their own environmental management system that regulates the environmental impact of production activities trying systematically to improve it.

In 2016 at the same time of the company twenty years, Prof launches its new green mark to confirm and make identifiable its commitment towards the environmental sustainability as integral part of its activity and of its process of production growth.

In 2017 the company confirms its strategy "eco-friendly" reconfirming its values of "sustainable" and "responsibility" and he does this by leaning to a new operator of electricity (Dolomiti Energia) coming from 100% renewable sources.





## ECOPACKING



Continua l'impegno di Prof verso un sistema produttivo in grado di ridurre al minimo l'impatto ambientale. Nel 2016 investe in un macchinario ad alta tecnologia per l'imballaggio in cartone biodegradabile, che permette la formazione dell'imballo su misura just in time. L'ottimizzazione sullo specifico prodotto consente una notevole riduzione dei costi di confezionamento, di magazzino e conseguentemente dei rifiuti da smaltire. Per migliorare la gestione dei rifiuti nello stabilimento sono stati collocati diversi punti di raccolta differenziata degli scarti di lavorazione. Tutti sono immagazzinati in appositi contenitori per essere poi destinati alle procedure di riciclo.

Prof continues its commitment towards a production system able to minimize the environmental impact . In 2016 Prof invests in a high-tech machinery for packaging made of biodegradable cardboard, which allows the packaging customized training just in time. The optimization on the specific product allows a considerable reduction of packaging costs, warehouse and consequently of the waste to be disposed. In order to improve the management of waste in the company, several separate collection points of processing waste have been placed. All are stored in special containers to be then destined to recycling procedures.





## CERTIFICATIONS



This is a translation of certificate N. IT15/0708



The quality management system of

**PROF S.r.l.**

Via Cao De Villa, 6/a - Loc. Falzè di Piave  
- 31020 Sernaglia della Battaglia (TV) - Italy  
has been assessed and certified as meeting the requirements of

**ISO 9001 / UNI EN ISO 9001:2015**

For the following activities

**Design, production and marketing of office furniture,  
furnishing and partition wall.**

EA Sector: 23

This certificate is valid from 15/09/2021 until 15/09/2024 and  
remains valid subject to satisfactory surveillance audits.  
Re certification audit due before 07/09/2024.  
Issue 3. Certified since 17/09/2015.

The audit leading to this certificate commenced on 03/08/2021  
Previous issue certificate validity date was until 15/09/2021



SGQ N° 0015 A

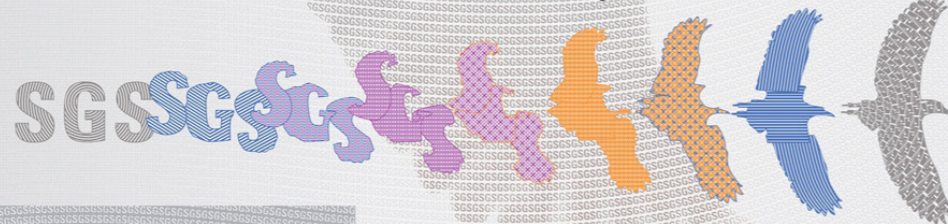
Membro di MLA EA per gli schemi di  
accreditamento SQG, SGA, PRD, PRS,  
ISP, GHG, LAB, LAT, PTP e RMT, di  
MLA IAF per gli schemi di  
accreditamento SQG, SGA, SSI, FSM,  
PRD e PRS e di MRA ILAC per gli  
schemi di accreditamento LAB, MED,  
LAT, ISP e PTP

Signatory of EA MLA for the  
accreditation schemes QMS, EMS,  
PRD, PRS, INSP, GHG, TL, CL, PTP and  
RMT, of IAF MLA for the accreditation  
schemes QMS, EMS, ISMS, FSMS, PRD  
and PRS and of ILAC MRA for the  
accreditation schemes TL, ML, CL,  
INSP and PTP

Authorized by  
Paola Santarelli

SGS ITALIA S.p.A.  
Via Caldera, 21 - 20153 MILANO - Italy  
t +39 02 73 93 1 f +39 02 70 10 94 89 www.sgs.com

Page 1 of 1



This document is a Web version of SGS certificate for electronic use  
exclusively. It shall only be available by clicking on SGS Certification Mark  
which has been posted on Your website. It shall not be printed in anyway.  
This document is copyright protected. No content or appearance may be  
reproduced without the express written permission of SGS. Any misuse,  
alteration, forgery or falsification is unlawful.

This is a translation of certificate N. IT12/1126



The environmental management system of

**PROF S.r.l.**

Via Cao De Villa, 6/a - Loc. Falzè di Piave - 31010 Sernaglia della Battaglia (TV) - Italy

has been assessed and certified as meeting the requirements of

**ISO 14001 / UNI EN ISO 14001:2015**

For the following activities

**Design and production of furniture and partitions for offices through  
the phases of cutting, drilling, edging and assembly.  
Marketing of accessories and furnishing accessories.**

This certificate is valid from 21/12/2021 until 21/12/2024 and  
remains valid subject to satisfactory surveillance audits.  
Re certification audit due before 19/11/2024.  
Issue 6. Certified since 21/12/2012.

The audit leading to this certificate commenced on 17/11/2021  
Previous issue certificate validity date was until 21/12/2021



SGA N° 0007 D

Membro di MLA EA per gli schemi di  
accreditamento SQG, SGA, PRD, PRS,  
ISP, GHG, LAB, LAT, PTP e RMT, di  
MLA IAF per gli schemi di  
accreditamento SQG, SGA, SSI, FSM,  
PRD e PRS e di MRA ILAC per gli  
schemi di accreditamento LAB, MED,  
LAT, ISP e PTP

Signatory of EA MLA for the  
accreditation schemes QMS, EMS,  
PRD, PRS, INSP, GHG, TL, CL, PTP and  
RMT, of IAF MLA for the accreditation  
schemes QMS, EMS, ISMS, FSMS, PRD  
and PRS and of ILAC MRA for the  
accreditation schemes TL, ML, CL,  
INSP and PTP

Authorized by  
Paola Santarelli

SGS ITALIA S.p.A.  
Via Caldera, 21 20153 MILANO - Italy  
t + 39 02 73 93 1 f +39 02 70 10 94 89 www.sgs.com

Page 1 of 1



This document is issued by the Company subject to its General Conditions of  
Certification Services accessible at [www.sgs.com/terms\\_and\\_conditions.htm](http://www.sgs.com/terms_and_conditions.htm). Attention  
is drawn to the limitations of liability, indemnification and jurisdictional issues established  
therein. The authenticity of this document may be verified at  
<http://www.sgs.com/en/certified-clients-and-products/certified-client-directory>. Any  
unauthorized alteration, forgery or falsification of the content or appearance of this  
document is unlawful and offenders may be prosecuted to the fullest extent of the law.



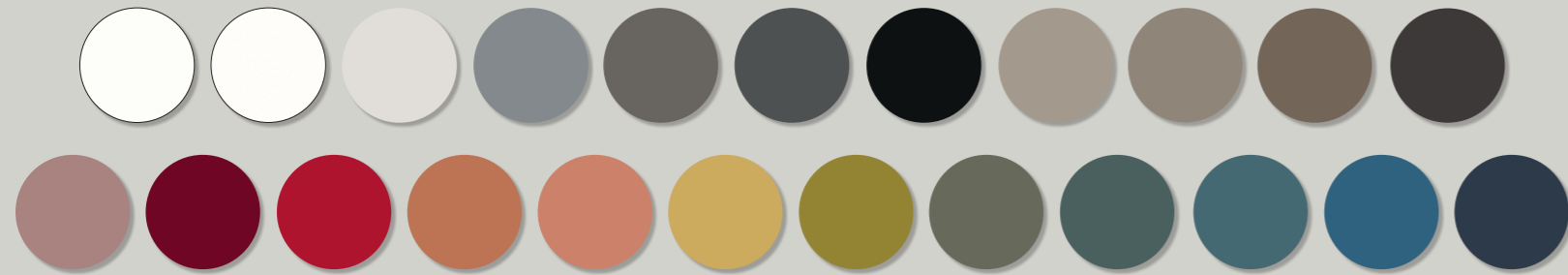
ME - Melaminico / Melamine



MC - Colore melaminico / Melamine colors



LA - Laccato / Lacquered



FX - Fenix NTM



IM - Impiallacciato legno / Wood veneer



## CARB ATCM Phase II

## COMPANY SHOWROOM























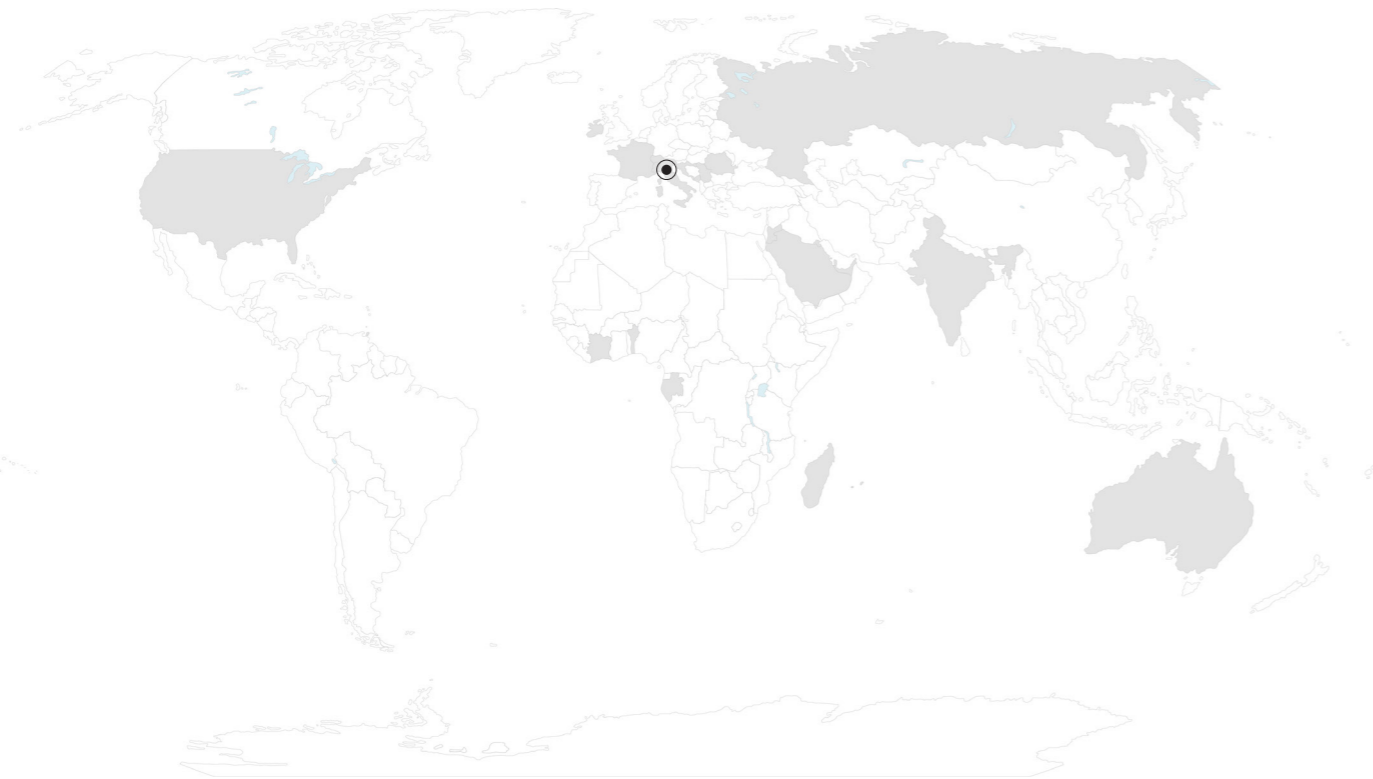




## REFERENCES

# FROM ITALY TO THE WORLD

# WE WORK WORLDWIDE



OVER  
30 COUNTRIES

ACROSS  
5 CONTINENTS

## ITALY

Arezzo  
Bindi s.p.a.  
Gall'oro s.r.l.

Belluno  
Azzalini Oil Company  
Buzzati Transport Company

Bologna  
VRM Italia s.p.a. Precision Machining

Bolzano  
PVB Petrolvilla

Bergamo  
Lopigam

Brescia  
Terraroli Morelli business consultant Office  
Filtrec s.p.a.

Como  
Cadorago Town Hall

Ferrara  
N.A.T.O. Detachment Office

Firenze  
Zenith Assistance Association  
F.I.G.C. - Italian football federation

Genova  
Erg Services s.p.a. Office  
Liguria Digitale Office

La Spezia  
Italian Navi

Latina  
Gaeta Town Hall

Milano  
Idrotermica Sanitaria - Bathroom furniture Dealer  
Viar Oil Pipeline Valves Production Company  
Pandora Jewellery  
Banca Etica Milano  
Armani Hotel Offices  
Publimethod s.p.a. - Advertising bartering Company  
Saccon Gomme Office

Modena  
Edil Cam s.r.l. - Building construction Company

Mestre  
Bitron s.p.a. - Research Company

Monza  
Ioppolo business consultant Office

Napoli  
Dima s.p.a. - Walt Disney dealer

Novara  
Sorim Construction Company  
Grassi Gomme - Tyres Company  
Carlo Nobili s.p.a. Rubinerterie

Padova  
Pettenon Cosmetic Company  
Giuseppe Zagolin Office  
Best Western Padova Hotel  
Vacutest Kima s.r.l. - Medical Industry  
Green Box - Industrial Chillers  
Alida Srl Shoe Factory  
Comune di Casalserugo

Pavia  
Assitalia Insurance

Pistoia  
U.S. Pistoiese 1921  
Sirim Investimenti s.r.l. - Real estate Agency

Pordenone  
Police Head - Quarters Immigration Office  
Super Beton Construction Company  
Veneto Banca Office  
Clinica MEDE - Medical Studio  
Dal Zin Accounting Firm  
Arredamenti Martinel

Ragusa  
Elisicilia s.r.l. - services for the aviation industry  
Sud Express Autotrasporti - Transport Company  
Multipla Coop - Company Services  
Multifidi - Financial Services

Reggio Emilia  
Zenit Group Srl/Sushiko Italia s.r.l. Development, Marketing, Management System

Roma  
Ghiaia Ponterosso Construction Company  
Record Office  
ENEA Alternative Energy Corporation  
Vatican's Offices  
RAS Insurance  
Sky Offices  
Saccucci Lawyer Office  
Promoimpresa s.r.l. - work formation  
Lupinacci & Cassano Lawyer Office  
IRBM Science Park s.p.a. - Biotech and pharmaceutical sector  
Traslochi CD Removals s.r.l. - transport company  
EIT RAWMATERIALS CLC SOUTH S.R.L. - alternative materials energy Company  
Ministero dell'Economia e delle Finanze  
Concessionaria Autostar  
Corte Dei conti  
Concessionaria Autostar

Rovigo  
Rinol Italia Research & Technology s.r.l. - industrial flooring and aesthetic coatings Company

Siracusa  
Erg Services s.p.a. offices

Trento  
Altea Software Company

Treviso  
Castelfranco Hospital  
Spironelli Iveco Service  
Stelbi Hydro-Sanitary Production Company  
Fornaci Calce Grigolin Construction Company  
Gracis Lawyer Office  
Chamber of Commerce  
M.S.P. associated Lawyers Office  
SAI Fondiaria Insurance Company  
Agos Trucks dealer  
Saccon engineering Office  
Casa Vinicola Bosco Malera -wine producer  
Centro Medico San Biagio s.p.a. - Medical Offices  
Vi.V.O. Cantine Sac  
Oro Contante



Compro Oro  
 Saiel fotovoltaic systems  
 Prealpi bank new site  
 Ability Group - Medical Furniture  
 OTL - Electrical Kart Company  
 WABi Lab. Snc - Communication Company  
 WOM Adv - social media marketing, web design and photo studio  
 F.L.F. Iveco Service  
 OTL Italia s.r.l. - Electro Kart Production  
 Trafilerie Industriali - Steel Processing Company  
 RAS Insurance agency  
 Green Style s.r.l. Offices  
 Centro Medicine Integrate s.r.l. - Medical studio  
 Cappelli Medical Studio  
 De Chigi Colmagro Carlet Vendramelli Studio- Accountant Office  
 Lazzarin Caffè Headquarter  
 Proplastek s.r.l. Plastic Molding Company  
 Nicoletta Mammucari Notary Offices  
 Corbanese Impianti s.r.l. Offices  
 Biemmereti s.p.a. Offices  
 Doal s.r.l. Offices  
 Ivanik s.r.l. Offices  
 Lorán S.r.l.  
 Antica Coloreria Camolei S.r.l.  
**Trieste**  
 Perri Notary Office  
**Udine**  
 Udine Stadium  
 Ca' D'oro s.p.a. Marble Processing Company  
**Varese**  
 Viar Oil Pipeline Valves Production Company  
 Monteleone Notary Office  
**Venezia**  
 Umberto I Hospital  
 Prodal s.r.l. - Frozen Food company  
 Atlantico Hotel  
 Consaf Assurance Business Financial Company  
 AZ Group - Real Estate Agency  
 Friul Rubber s.r.l.  
 Impertek s.r.l.  
 Foscarini S.p.a.  
**Vicenza**  
 Frighetto furniture Company  
 Viktoria Consulting Insurance Company  
 Zeta Farmaceutici s.p.a. - Medical Industry  
 Carretta&Faccio Office - Transport Company

## AUSTRALIA

Sidney  
 Toyota Sydney

## BAHREIN

Manama  
 Al Manamah Infinity Concessionaire Cars  
 Infinity - Concessionarie cars

## BENIN

Cotonou  
 Italian Embassy

## CROATIA

Puská  
 GPP MikicGroup

## ETHIOPIA

Addis Abeba  
 National Oil Ethiopia Plc

## FRANCE

Paris  
 Louis Vuitton - Galeries Lafayette  
 Socota Group  
 Quimper  
 Rochebobois  
 Marseille  
 Ambassade du Brésil à Marseille

## GABON

Libreville  
 Custom Manager Office

## INDIA

New Delhi  
 Bombay Office

## IRELAND

Dublin  
 Dublin University

## IVORY COAST

Abidjan  
 Bicici BNP Paribas

## JORDAN

Amman  
 Arab Potash Co. Semi-Government Org.  
 Al Sarraf Group  
 Arabatec Jardaneh Engineers and Architects  
 Bustamji motors  
 IB Law  
 I.B.C. Bank  
 Nestle Water  
 King Academy  
 Raya Jet  
 Royal Court  
 Bank Al-Ethiad  
 Zakko Group

## KUWAIT

Hawally  
 Seif Palace Emiri Diwan Offices Bldgs  
 Bayan Palace

Kuwait city  
 Ministry of Complex

## LIBYA

Benghazi  
 University Of Benghazi

## MADAGASCAR

Antananarivo  
 Jovenna Petroleum  
 TELMA - Madagascar Telecommunications  
 BFV Bank  
 Socota Group

## MALDIVES

South Male Atoll  
 Ithaafushi Maldives Resort

## MAURITIUS

Socota Group

## MOROCCO

Rabat  
 Ministry of Interior  
 Ministry of Finance  
 Ministry of Justice  
 Ministry of Tourism

## MONTENEGRO

Budva  
 Townhall

## OMAN

Muscat  
 Authority for Electricity Regulation

## QATAR

Doha  
 Al Sharq Low Rise Hotel  
 Civil Aviation  
 Curio Hotel  
 Club House  
 Hilton Hotel  
 HEC Paris - Tornado Tower  
 Sheraton Hotel  
 Al Jaber Engineeing Group  
 Hazim Brothers for Construction  
 The Lusail Office Tower COM 18  
 Durkhan Air Base  
 GWC Qatar Logistic  
 The View Hospital  
 The View Hospital  
 Qatar University Higher Administration Building

Lusail City  
 Korean Medical Center

## ROMANIA

Bacau  
 Eldomir  
 Hurghis

## RUSSIA

Ekaterinburg  
 Legislative Assembly  
 Moscow  
 Don - Stroy Building

Siberia

Omsk Petroleum Refinery

San Petersburg

Constitutional Court of the Russian Federation

Fominsk

000 Naramonilit

#### **SAUDI ARABIA**

Al Khobar

Tecnicas Reunidas Saudi Arabia

Ansab Head Office

Damman

Abdoulla Fouad Holding Company Medical Supplies Building

Jeddah

Huda Lighting

Effat College

King Abdullah University

Dr. Munir Dental Clinics

Madza

Raed Saud College

Al Tayar Group

Saudi Airline

Ram Al Mabani LTD

Riyadh

Raya Abdul - Moute Al - Misi Est. Trading Company

Aptec

HRDF - Human Resource Development Found

Novotel - Al Anoud Vip Section

ABB Group

Ministry of Commerce

Ministry of Labour Council of Cooperative Health Service

Security Control Company

Malaz Capital

Al Elm Information Security Company

Unified Real Estate Development Co.

Council of Saudi

Wire Filter

Sapphire For Medical Services

Human Resources Development Fund

Saudi Industrial Investment Group

Aramco Trading Company

SITCO - Saudi Information Technology Company

Tarfeeh

Degree Design

BAB - Bank Al-Bilad

Mawakeb

RICC - Riyadh International Catering Company

Taqa

STC - Saudy Telecom Company

Dallah HQ

The Walk

NOK SOK - NEOM

LVI Masharee

National Security Center (NSC)

Human Capability Development Program - HCDP

SDAIA Riyadh - Saudi Authority for Data and Artificial Intelligence

NDMC - National Debt Management Center

MOMRAH - Ministry Of Municipal Rural Affairs & Housing

Financial Academy Headquarter Located On Floor 3-8, Parcel 2.07 KAFD

Vip Terminal Majmaa Airbase

Graduation Hall Majmaa Airbase

Ministry Of National Guard

UANOC Olympic Committee

Saudi National Bank (SNB)

#### **SERBIA**

Belgrado

Mobtel Buildings

#### **SWITZERLAND**

Berne

Israeli Embassy

Lugano

IHD consultants

#### **TRINIDAD**

Port of Spain

Advanced Foam Inc. - Foam packaging and decorative Company

Jaid's Interiors offices - Interior designer

Jagdeo Singh Lawyers Office

#### **TOGO**

Lomé

Pia Togo (Platform indiistruual Adetekope)

#### **UNITED ARAB EMIRATES**

Abu Dhabi

Ambulatory Healthcare Service

Gasco

Union Railway

National Bank of Abu Dhabi

Nova Systems Engineering - Fire & Safety services Company

Presidential Guard Command

Ministry of Justice

Dubai

Police Department

Ministry of Interior

A.D.G.D.C. Gas Development Company

Zener Electronic Service LLC - Electrical and electronics Company

Sharja

Sharja Municipality

#### **UK**

London

My Doll Best Friend Ltd Shop

#### **USA**

Fort Lauderdale

Sun Air - Electronic Company

Miriam Moore Design Studio

# OUR PRODUCTS

**Executive collection**  
**Working system**  
**Bespoke conference tables**  
**Storage**  
**Reception**  
**Wall partitions**  
**Lighting**  
**Profmood complements**

## EXECUTIVE COLLECTION

Block 2.0  
Sessanta  
Slim  
Entry  
Extralight



# BLOCK 2.0





# SESSANTA



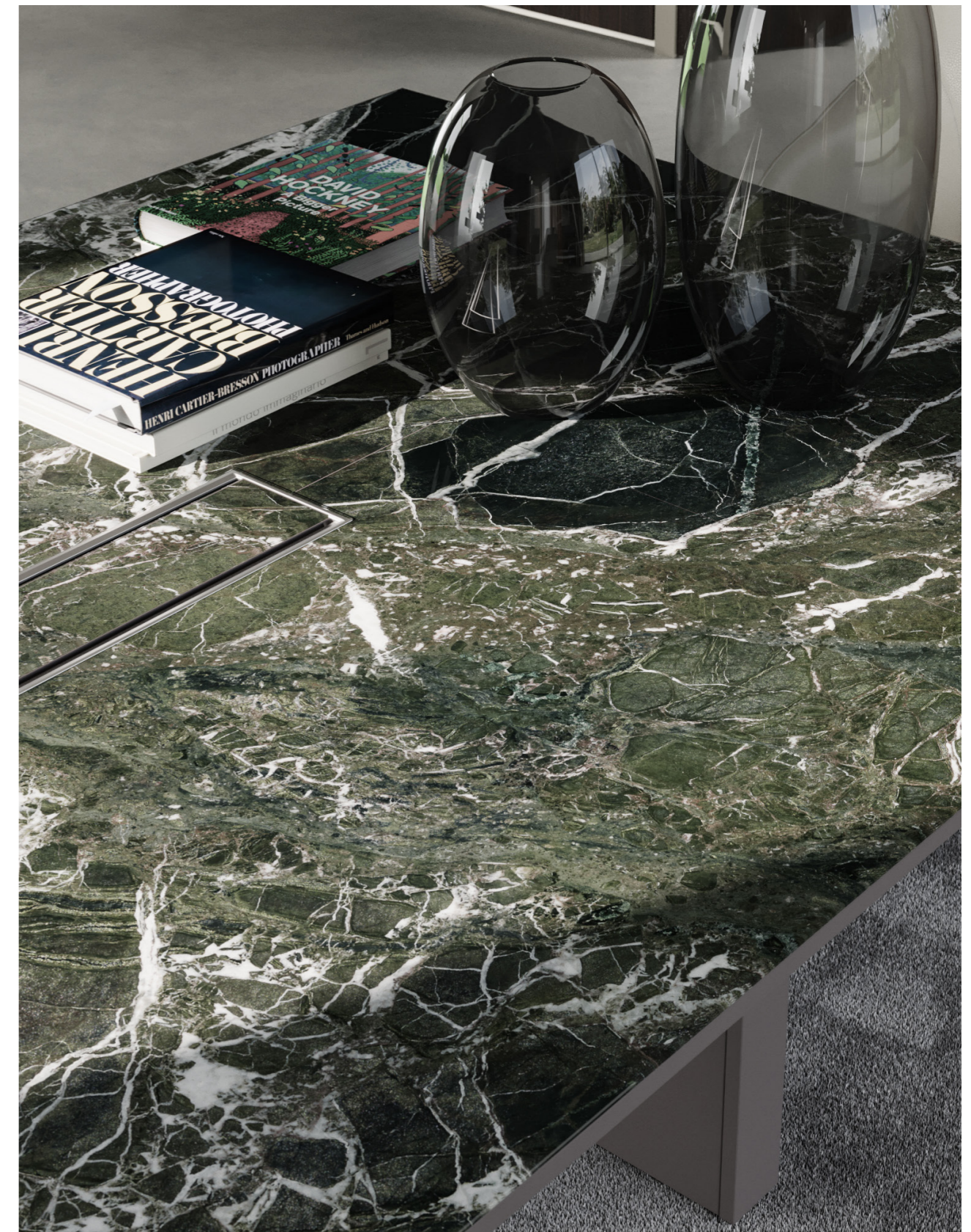


SLIM





SLIM





# ENTRY





# EXTRALIGHT





# EXTRALIGHT





# WORKING SYSTEM

Zero  
Dieci 2.0  
Dodici  
Openwall  
Openspace



# ZERO MANAGER





# ZERO WORKING





# DIECI MANAGER





# DIECI WORKING





# DODICI MANAGER





# DODICI WORKING





# OPENWALL





# OPENSOURCE





BESPOKE CONFERENCE TABLES















# STORAGE

Profbox  
Profslide  
Profcase



# PROFBOX





# PROFSLIDE





# PROFCASE





## RECEPTION



# RECEPTION





# RECEPTION





# WALL PARTITIONS

Profwall



# PROFWALL





# PROFWALL





# PROFWALL





# LIGHTING

Grace N°1  
Grace N°2

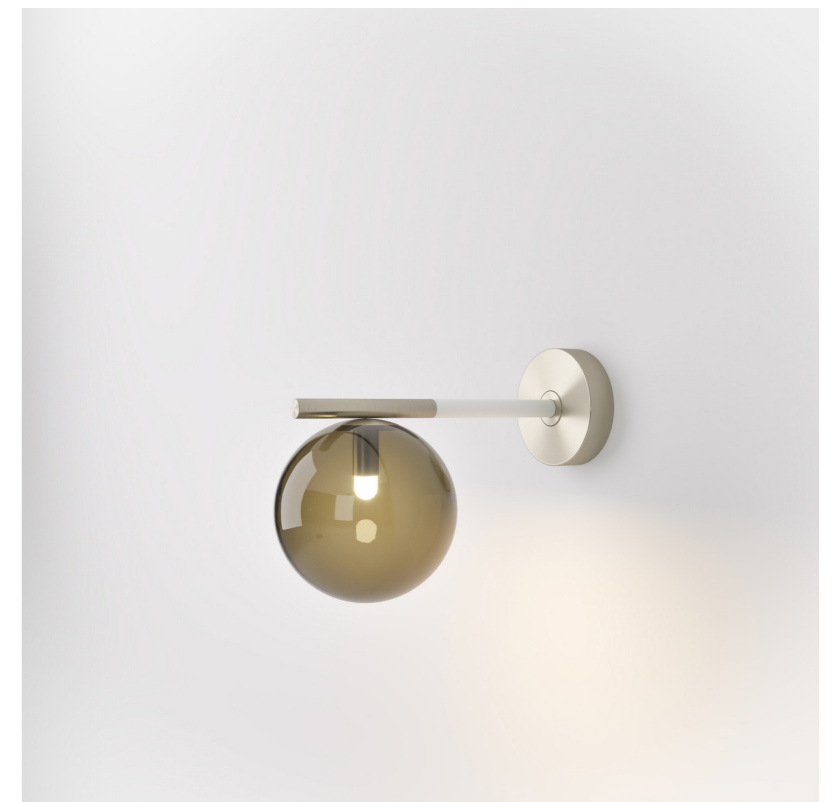


# GRACE N°1





GRACE N°2





PROFMOOD  
COMPLEMENTS



# SHADE



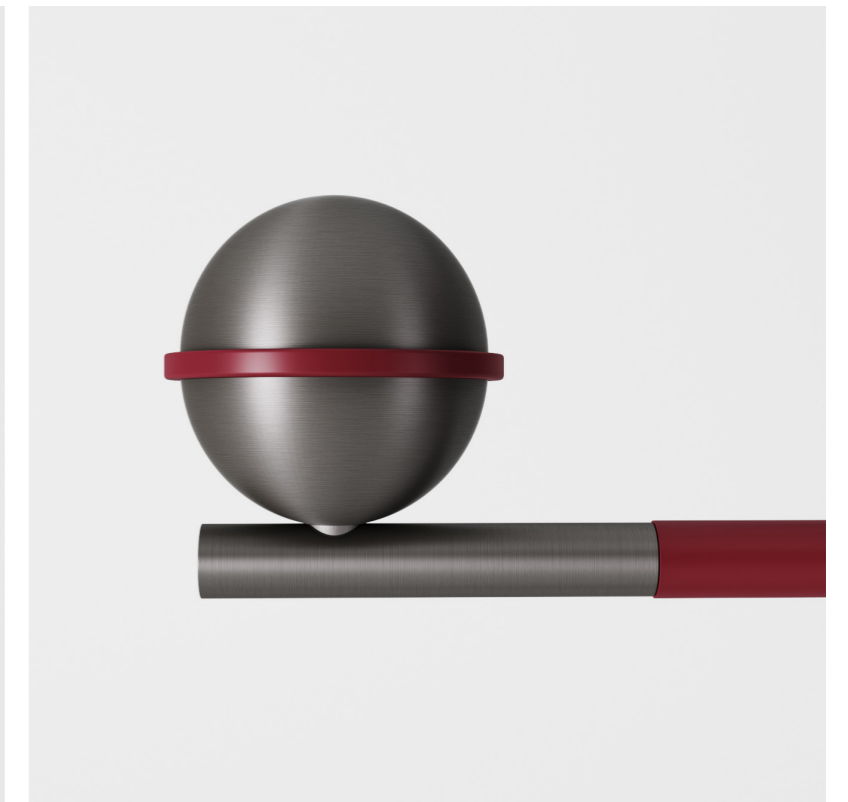
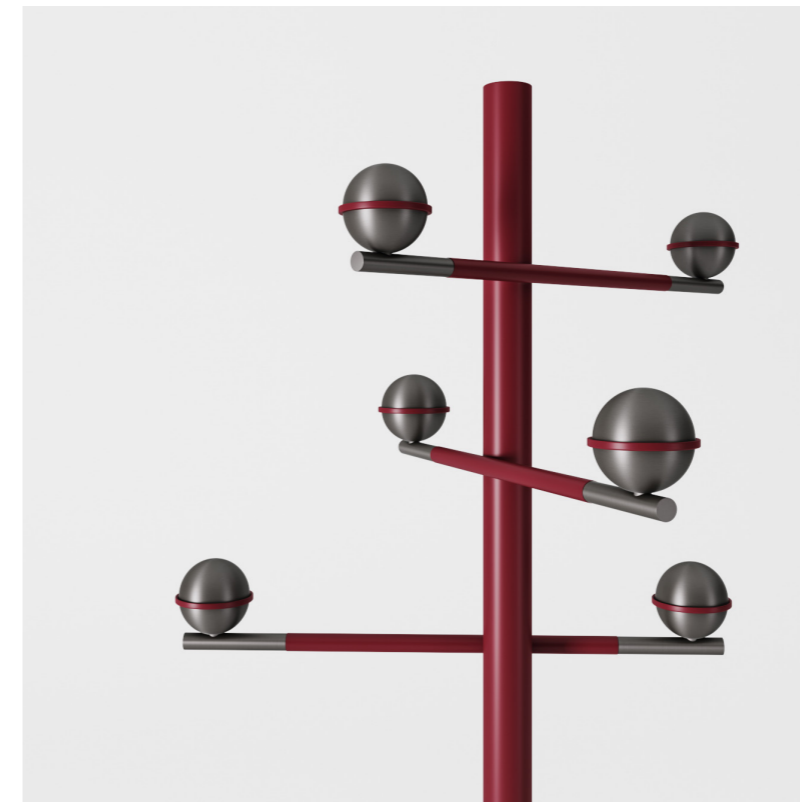


JACKIE





JANE





# LOUISE



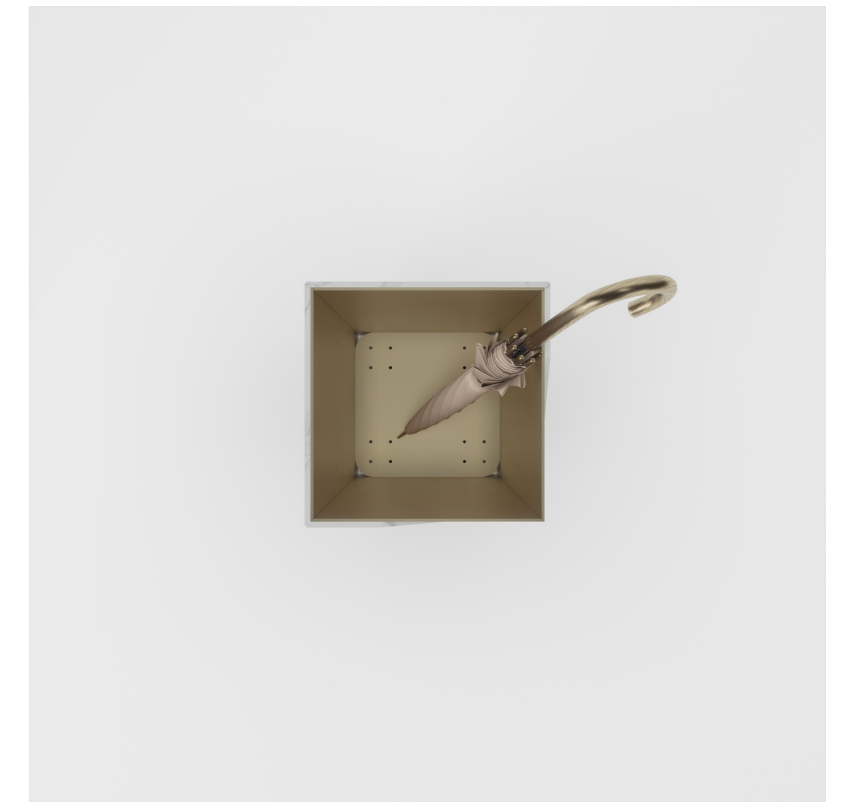


# LOUISE





# LOUISE



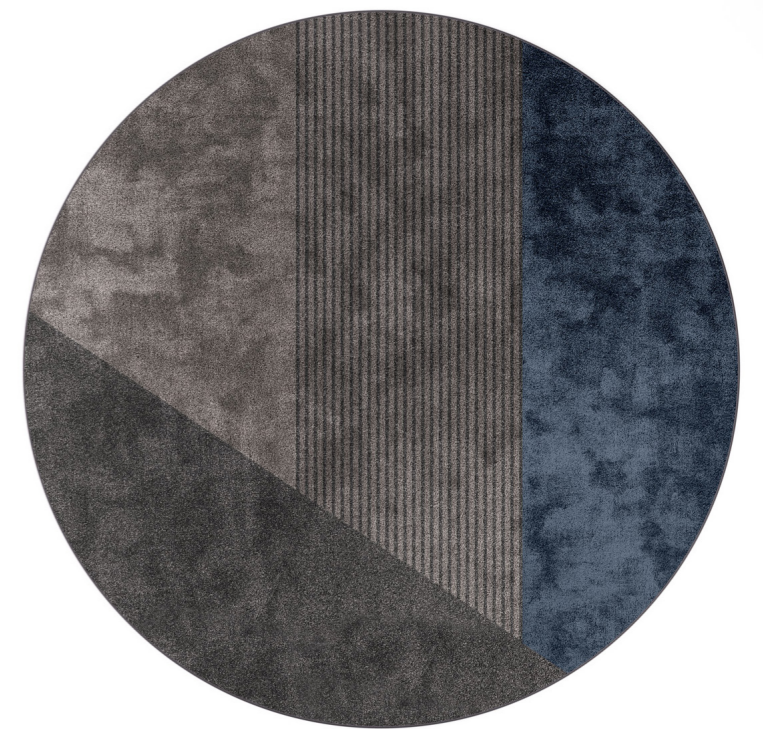
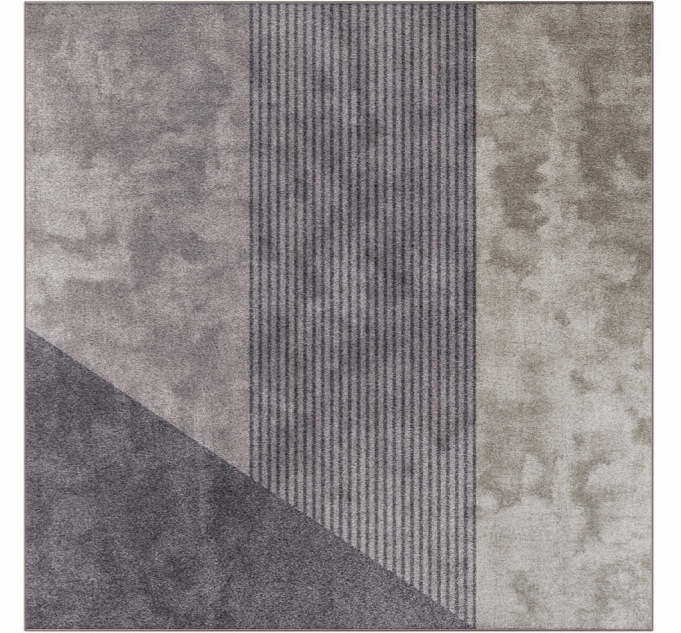
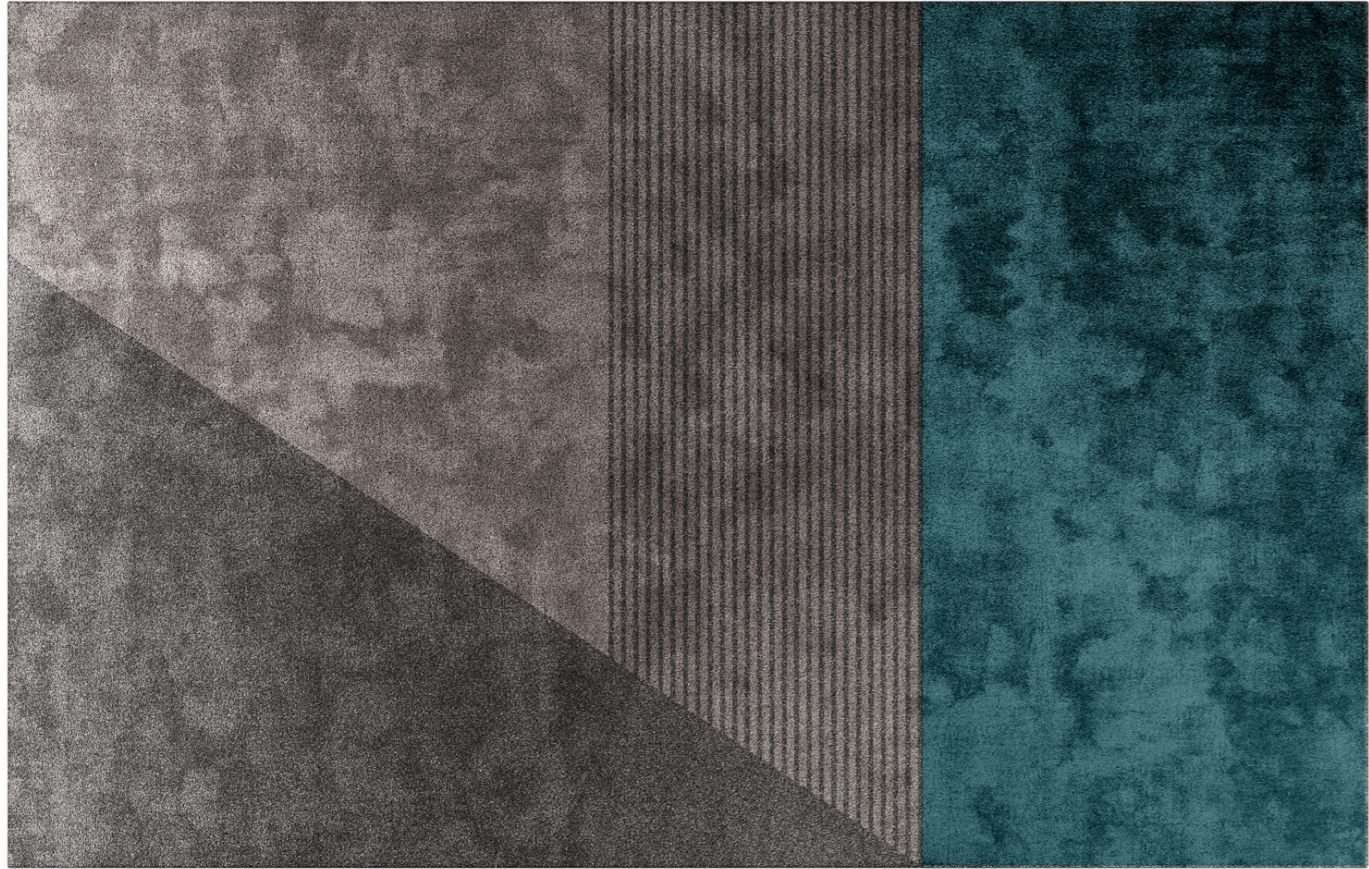


MOON, JOSEPHINE



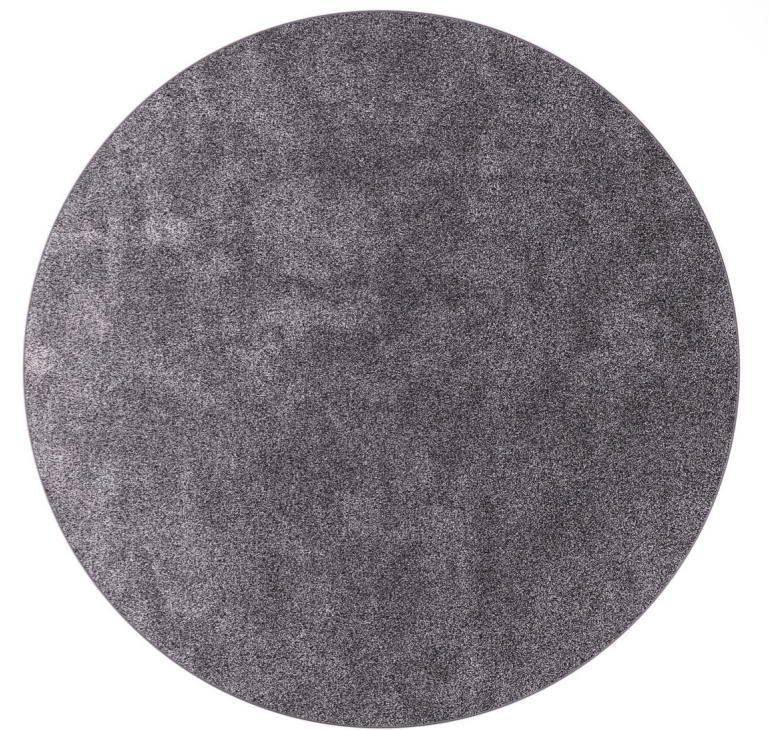
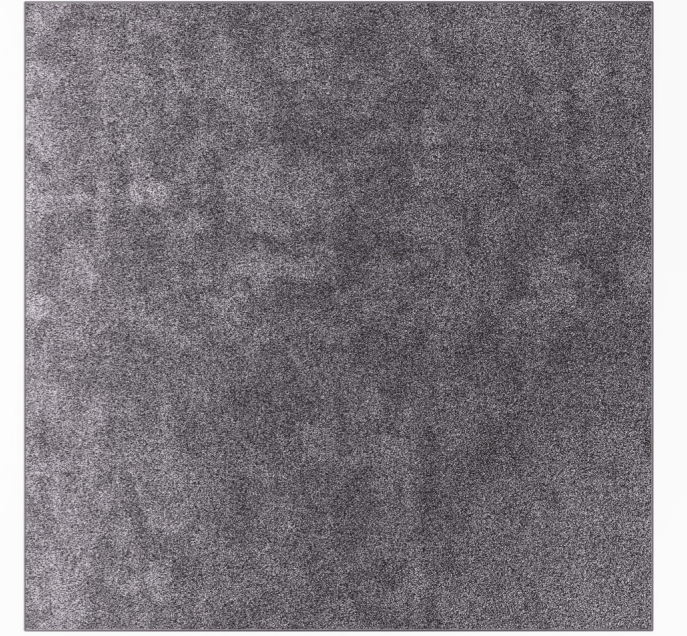
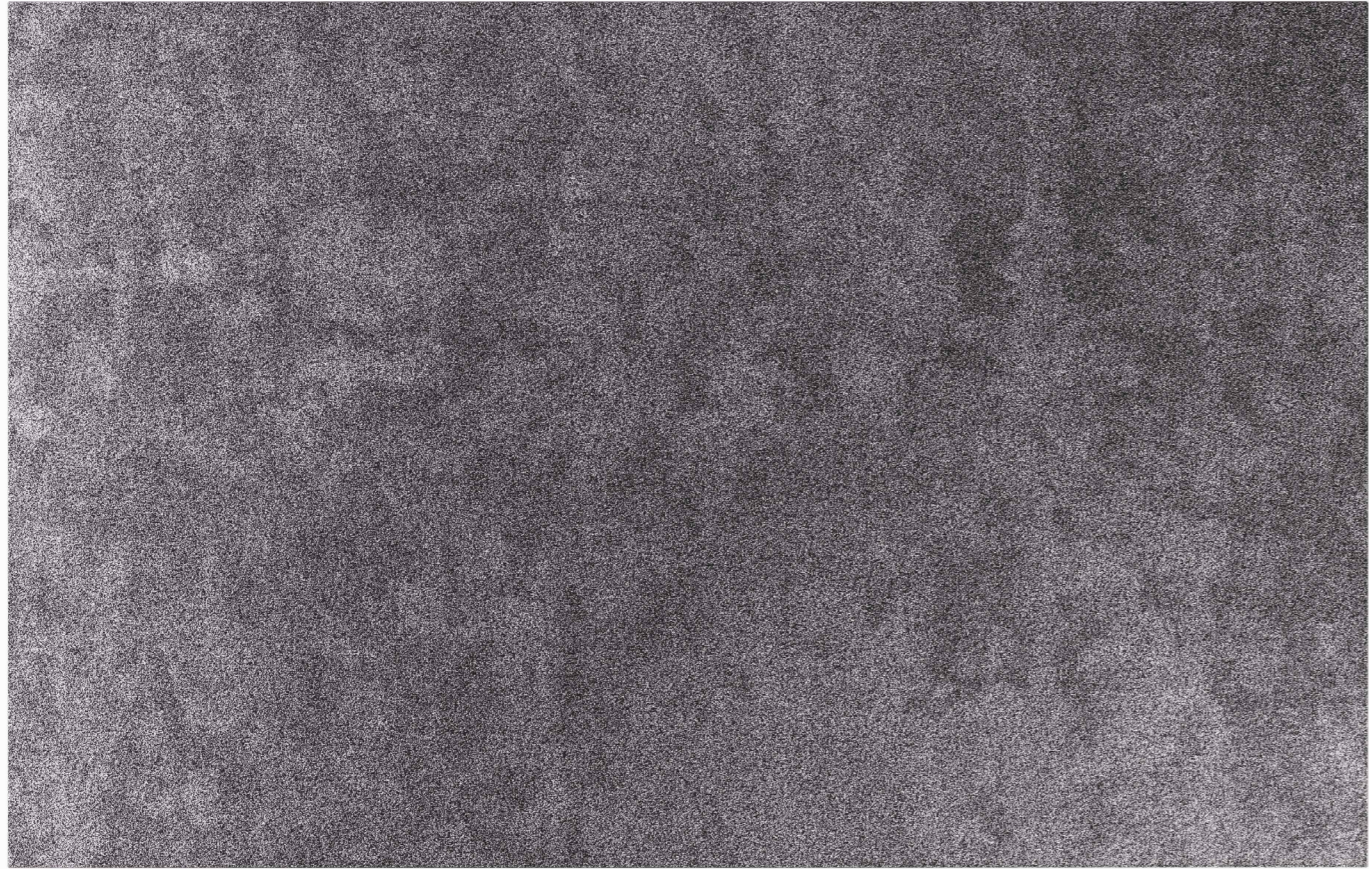


RAY



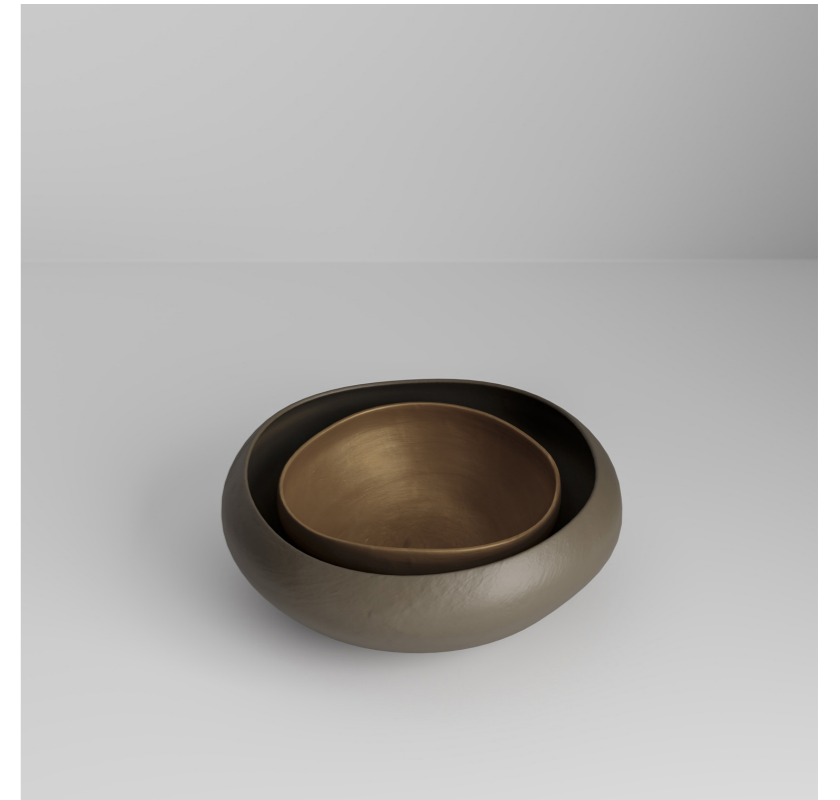


# SHINE





OLIVIA, INGRID, BLOOM,  
SOPHIE, PROFUMO





**UNI** PROF products are according to UNI standard



CEE standard



low emission of formaldehyde



productions process that respect the ambient



energy from 100% renewable sources.



**PR  
OF**

PROF srl  
Via Cao de Villa 6/A  
Località Falzè di Piave  
31020 Sernaglia della Battaglia, TV / Italy  
T. +39 0438 903190 F. +39 0438 903228  
p.iva - cod. fisc IT03134570260  
[www.proffice.it](http://www.proffice.it) [info@proffice.it](mailto:info@proffice.it)



